



Ministère de l'Enseignement Primaire,  
Secondaire et Professionnel

# KOTANGA MPE KOKOMA

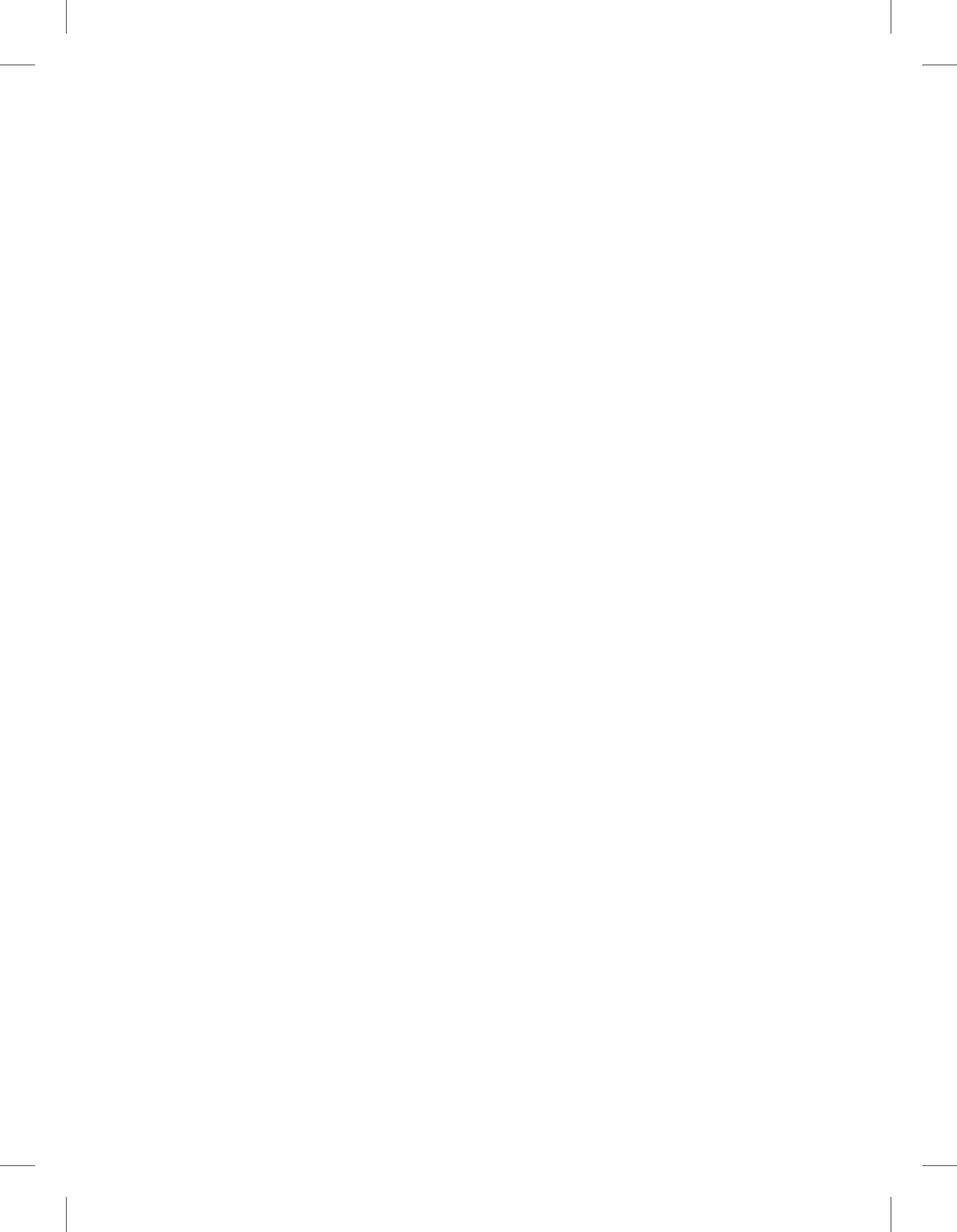
Kaye ya moyekoli

LINGALA

3



Edition 2018



# KOTANGA MPE KOKOMA

Kaye ya moyekoli



Direction des Programmes Scolaires et Matériel Didactique

## LIKWE LYA KAYE

<b>MALOPA MA YAMBO</b> .....	1
<b>BOKOTISI O KAYE</b> .....	2

### **ETENI YA 1 : KOBIKA O ZINGAZINGA WA YO**

<b>Mposo ya 1</b> : Libota-Mboka .....	4
<b>Mposo ya 2</b> : Engumba .....	8
<b>Mposo ya 3</b> : Milulu mya libala .....	12
<b>Mposo ya 4</b> : Milulu mya lipolome .....	16
<b>Mposo ya 5</b> : Ekolongonele ya bilamba .....	20
<b>Mposo ya 6</b> : Bisika bya lobiko .....	24

### **ETENI YA 2 : KOBATELA ZINGAZINGA WA YO**

<b>Mposo ya 8</b> : Bolambi bilei .....	30
<b>Mposo ya 9</b> : Mbuma mpe bimeli .....	34
<b>Mposo ya 10</b> : Myete .....	38
<b>Mposo ya 11</b> : Kobatela zingazinga wa biso .....	42
<b>Mposo ya 12</b> : Bibwele .....	46
<b>Mposo ya 13</b> : Nyama ya zamba .....	50

### **ETENI YA 3 : KOTOMBOLA ENGUMBA WA YO**

<b>Mposo ya 15</b> : Misala mya bilanga .....	56
<b>Mposo ya 16</b> : Misala mya maboko .....	60
<b>Mposo ya 17</b> : Nzela ya bokumbi .....	64
<b>Mposo ya 18</b> : Bikumbi .....	68
<b>Mposo ya 19</b> : Masano ma momesano .....	72
<b>Mposo ya 20</b> : Masano ma monyolisi nzoto .....	76

### Maloba ma yambo

O nsuka ya mobeko mwa mitano (5) mwa mibeko mya bokambi boteyi o kati ya Lepibiliki Demokalatiki ya Kongo, ezali na lisengami linene lya botombwami na mobimba mpe na bolamu bwa moto moko oyo azali kopesa ntina mpe na bokitisi ye o kati ya molongo mwa bato.

Mpo ya kokokisa lisengami lina , moyekoli wa mboka Kongo asengeli o nsuka ya eteyelo ya yambo kozala na likoki lya kotanga, kokoma, kotuya, kotongolo ntina mpe koloba na lokota la mboka mpe na lifalase.

Kasi, lelo moyekoli, o nsuka ya eteyelo ya yambo, azali kokutana na mikakatano ebele mpo ya botangi mpe bokomi ; mpe makoki maye azwi na mambi ma eteyelo makomi naino te o esika eye mokili mobimba moyebi.

Makambo maye matalisami na mimekano ndenge na ndenge o ekolo Kongo (TENAFEP) lokola mpe mya mokili mobimba ( EGRA) bolongi boke o mimekano miye bomonisami o kati ya mateya maye mamonisami lokola ntina mpenza ya bozwi boke bwa makoki ma bayekoli na botangi mpe bokomi. « Boyebi bolamu bwa botangi mpe bokomi bozali kotikala mpenza nzela esengeli mpo ya kobongisa mateya malamau o kati ya mambi masusu ma boteyi.

Mpo ya kobongisa likambo lyango, Minisitele ya mateya ma yambo, ma ntei mpe ya misala mya maboko, azwi mikano mya makasi mya ntina miye mizali mpo ya kobongisa boteyi mpe boyekoli bolamu, na bongo, na botomboli botangi mpe bokomi o molongo mwa mateya manene...


Mpo na yango, Minisitele ya mateya ma yambo, ma ntei mpe ma misala mya maboko ezali kokumisa lisalisi liye liwuti epai ya bandeko basusu na biloko bya misala mpe misolo mpo ya bobongisi boyekoli bolamu mpe ya bobongoli ndenge ya botangisi o ekolo Kongo.

Buku iye isalemi na boyangeli bwa molongo mwa mateya mpe bisaleli bya mango [DIPROMAD] na lisungi lya basalisi baye bazali mpo ya boteyi mpe boyekoli botangi mpe bokomi na nkota ya mboka. Ezali mpenza buku ya minisitele ya mateya ma yambo, ma ntei mpe ma misala misala mya maboko, mpe ipesami na bayekoli mpe na balakisi ba kelasi ya yambo, ya ibale, mpe ya isato o biteyelo binso bya yambo bya leta mpe o biteyelo bya bato bango moko biye bindimami na leta. Bakomiyingisa mpenza na bobongisi boteyi mpe boyekoli.

Balakisi babali mpe basi basengeli kotanga na bozindo buku iye ya motuya mbala na mbala, basengeli kosalela yango na ndenge ya malamau mpo ya bolamu bwa bayekoli .

**Gaston MUSEMENA BONGALA**

*Minisitele ya mateya ma yambo, ma ntei mpe ma  
misala mya maboko*



## BOKOTISI O KAYE

**M**wango ACCELERE ! eye ekambemi na USAID ekosunga engumba Congo na mambi matali botombwami bwa lolenge la mateya mpe boyekoli. Mingi mingi na boyekoli kotanga mpe kokoma o kati ya biteyelo bike.

ACCELERE ! amipesi mosala to mbela ya kopesa bayekoli makoki ma ntina mpo ya boyekoli kotanga mpe kokoma o nzela ya nkota isato : lingala ; kiswahili mpe tschiluba.

Kokoma buku mpe kaye ya botiyi mayele mpo ya bayekoli , mpe buku ya balakisi ezali mosala mwa bokundoli bwa zebi ya sika mpenza mpe makambo ma solo.

Tala ntina kaye eye esengeli kokota na molongo mwa buku ya engumba mobimba, ekambemi na bitapi. Bakosalela yango kaka o ndako. Kaye ekosalisa moyekoli na kosala misala mya ndako soko ayekoli o kelasi. Tokosenga na bino na kopesaka moyekoli minuti ntuku isato na mokolo mpo ya kosunga ye mpo ya botiyi mayele bwa mokolo na mokolo :litangi mpe galamele.

Mpo ya botiyi mayele na mambi matali litangi, mwana wa bino akotangela bino litangela lya mbula ya ye mpe akolimbola lyango.

Mpo ya botiyi mayele na mambi matali galamele makokambema na boyekoli lokota : koluka ezaleli ya liloba, nkondo ya nkombo, kotia nkombo na boyike to na boko...

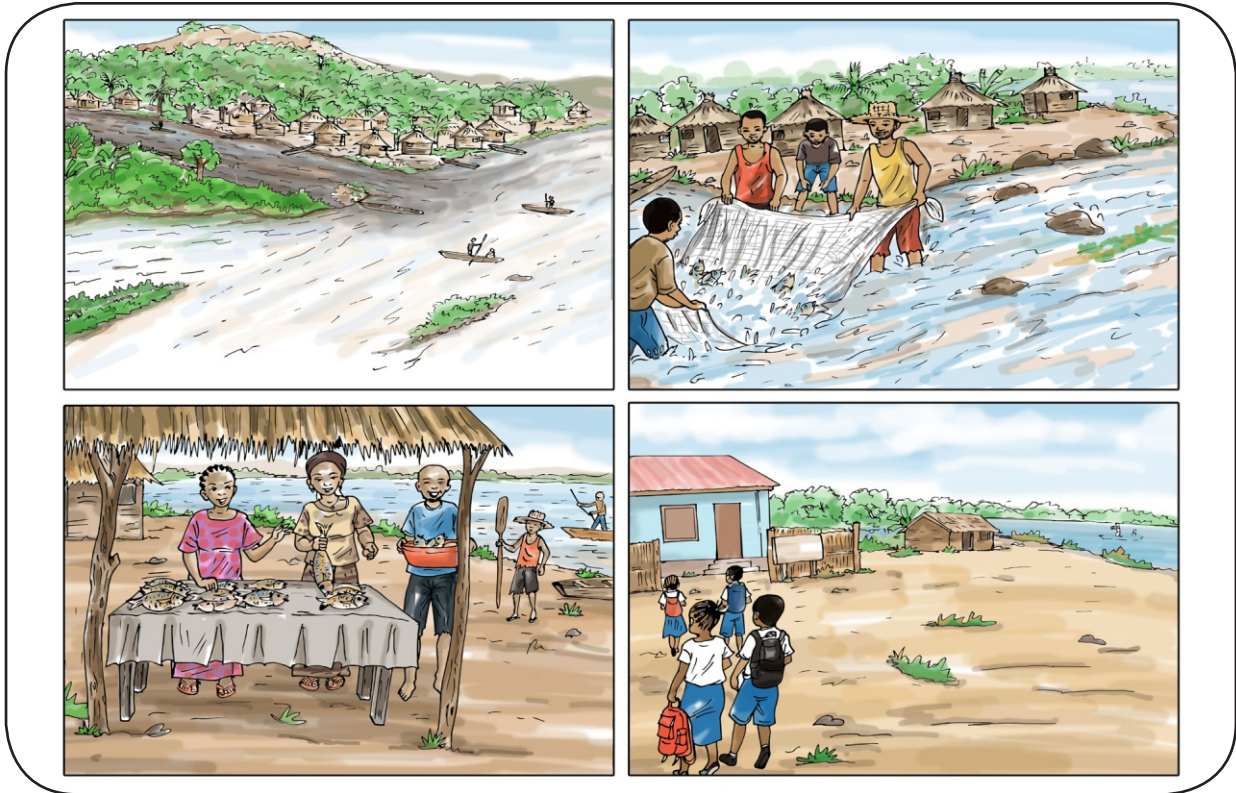
Mwango ACCELERE ! etondi botondi mingi na baye banso basungi mpo ya bokomi bwa buku eye ya mateya : bakambi ba mwango mwa biteyelo mpe bisalelo bya mateya (DIPROMAD), mosala mwa engumba mpo ya mateya (SERNAFOR), bilo ya bakambi balakisi (IG), bilo ya bolandeli mbongwana mpe mayele masika ma botangisi, bato ba mayele ba kelasi ya likolo (UNIKIN, UPN, CELTA...)

Buku eye ezali na ntina mingi mpo ya moto nionso akosalela yango.

**ETENI YA 1**

**KOBIKA O ZINGAZINGA  
WA YO.**

Nabeti lisolo liye na moto moko o libota.



Nakomi biloko bisato, bisepelisaka ngai o mboka.

1.	
2.	
3.	





Natali lisolo liye mpe nakamati masakola masangela masato mpe nakomi mango.

1. ....
2. ....



Nakomi masakola masangela mabale.

1. ....
2. ....



## Mposo ya 2

Nabeti lisolo liye na moto moko o libota.



Nakomi bingbunduka bisato biye nayebi.

1.

2.

3.



Nakomi lisakola motuna moko.

1. ....

2. ....

Nakomi masakola mituna mabale.

1. ....

2. ....



Nabeti lisolo liye na moto moko o libota.



Nakomi makambo masato nasakalaki na milulu mya libota.

1.

2.

3.





Natali lisolo liye mpe nakomi nkombo ya eleko yoko bapesi na libala liye.

1. ....

2. ....

Nakomi nkombo isato ya bato, ya nyama mpe ya biloko.

1. ....

2. ....

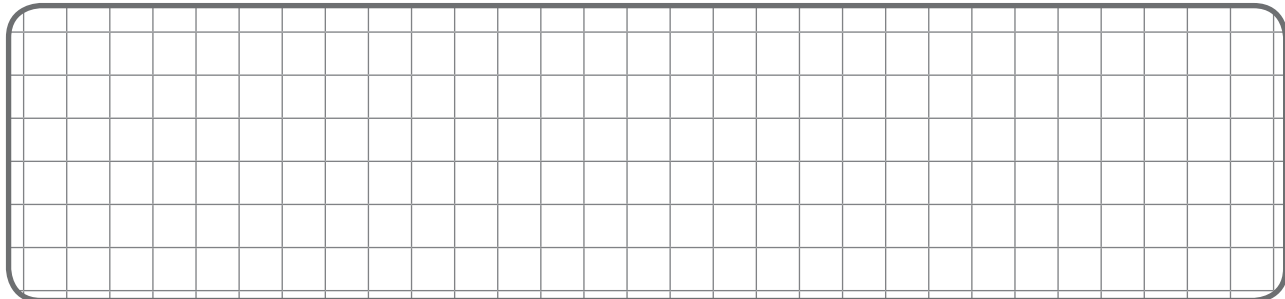
Na maloba maye manso, nazingi liloba liye litali milulu mya libota te.

Loi
Lipolome
Pasika
Batisimo
Milulu mya suka mbula

Natii maloba mazangi na lisakola liye :

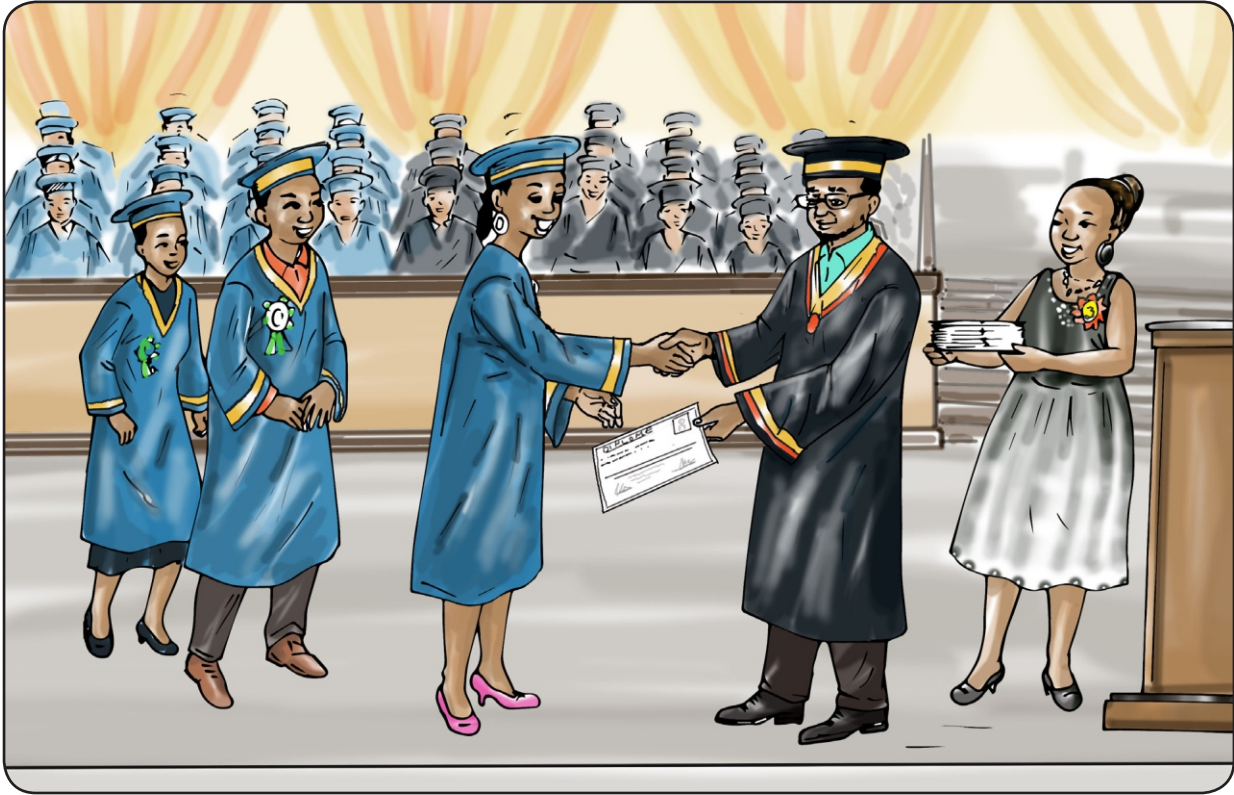
O libota tozalaka na milulu mya, .....

Nakomi na masakola mabale makambo nasalaki mokolo tozalaki na milulu mya nsuka mbula:



## Mposo ya 4

Nabeti lisolo liye na moto moko o libota.



Nakomi makambo masato nasalaka na milulu mya lipolome:

1.

2.

3.



Nakomi nkombo bomei ibale.

1. ....
2. ....

Nakomi masakola mabale, lisakola lyoko na nkombo bomei mpe lisakola lisusu na nkombo lisanga.

1. ....
2. ....

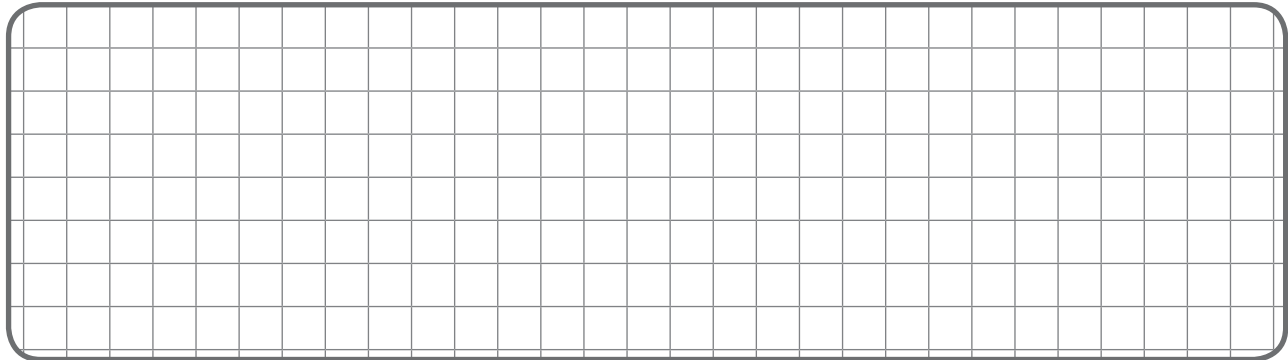
Na maloba maye manso, nazingi liloba liye litali lipolome.

Kosilisa kelasi
Kolonga
Kokweya
koNakomi
Kokima

Natii maloba mazangi na lisakola liye :

Na milulu mya lipolome, na .....

Nakomi na masakola mabale makambo nasalaki mokolo tozalaki na milulu mya lipolome.



## Mposo ya 5

Nabeti lisolo liye na moto moko o libota.



Nakomi makambo masato nasalaka mpo na kotiya bopeto na bilamba.

1.

2.

3.





Nakomi nkombo bomei moko na nkombo lisanga moko.

1. ....
2. ....



Nakomi masakola mabale. Lisakola lyoko na nkombo bomei lisusu na nkombo lisanga.

1. ....
2. ....

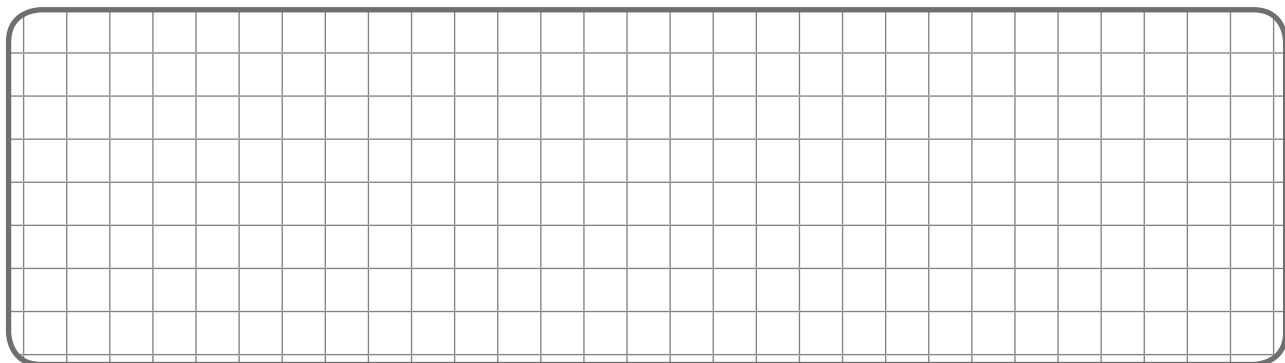
Na maloba maye manso, nazingi liloba liye litali bopeto bwa bilamba te.

Kongoma
Kotanda
Sabuni
Kobwaka
Mai

Natii maloba mazangi na lisakola liye :

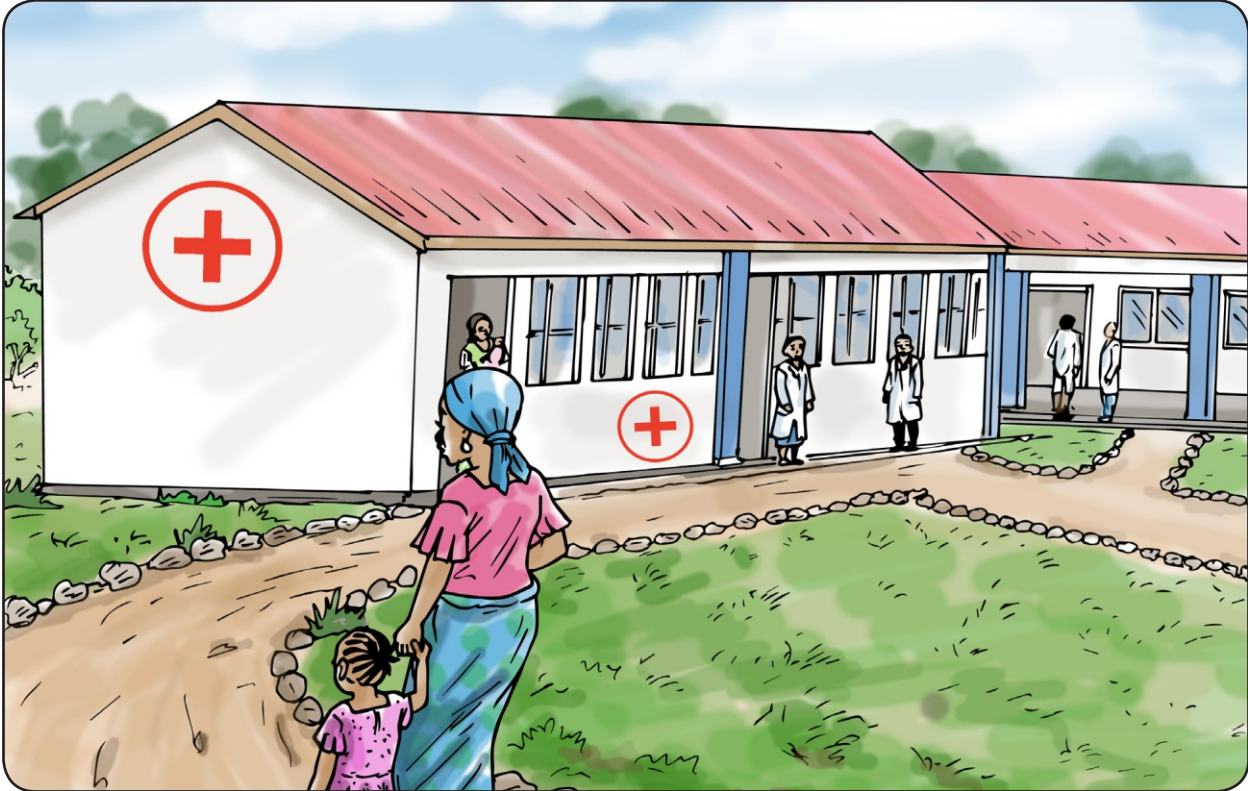
Nangomaka bilamba bya ngai na .....

Nakomi na masakola mabale lolenge otiyaka bopeto bilamba bya yo.



## Mposo ya 6

Nabeti lisolo liye na moto moko o libota.



Nakomi makambo masato nasalaka mpo na kokima bokono.

1.

2.

3.



Nakomi nkombo moko ya moto, nkombo moko ya nyama mpe nkombo moko ya eloko.

1. ....

2. ....

Nakomi lisakola lyoko na nkombo ya moto, nyama mpe eloko.

1. ....

2. ....

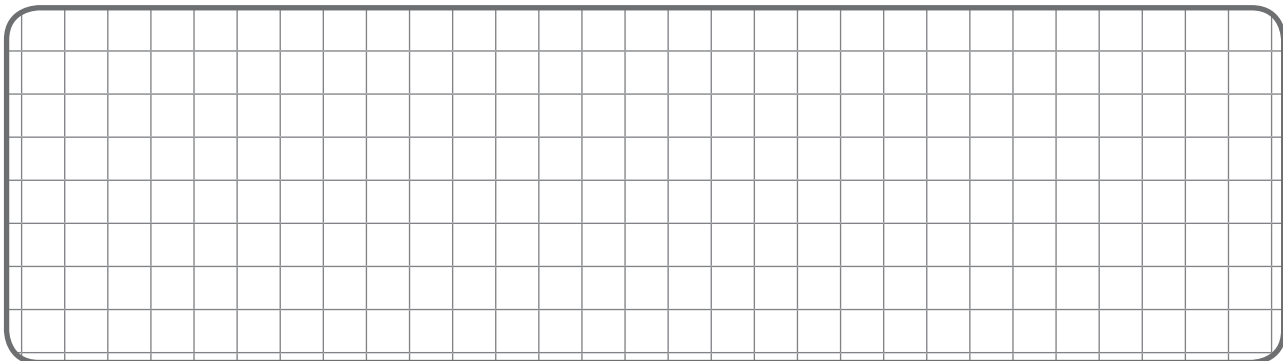
Na maloba maye manso, nazingi liloba liye litali bisika bya bokolongono.

Monganga
lopitalo
Disipasele
Lifulume
Ndako

Natii maloba mazangi na lisakola liye :

Soki nabeli lifulume apesaka ngai .....

Nakomi na masakola mabale nini lifulume asalaka o lopitalo.





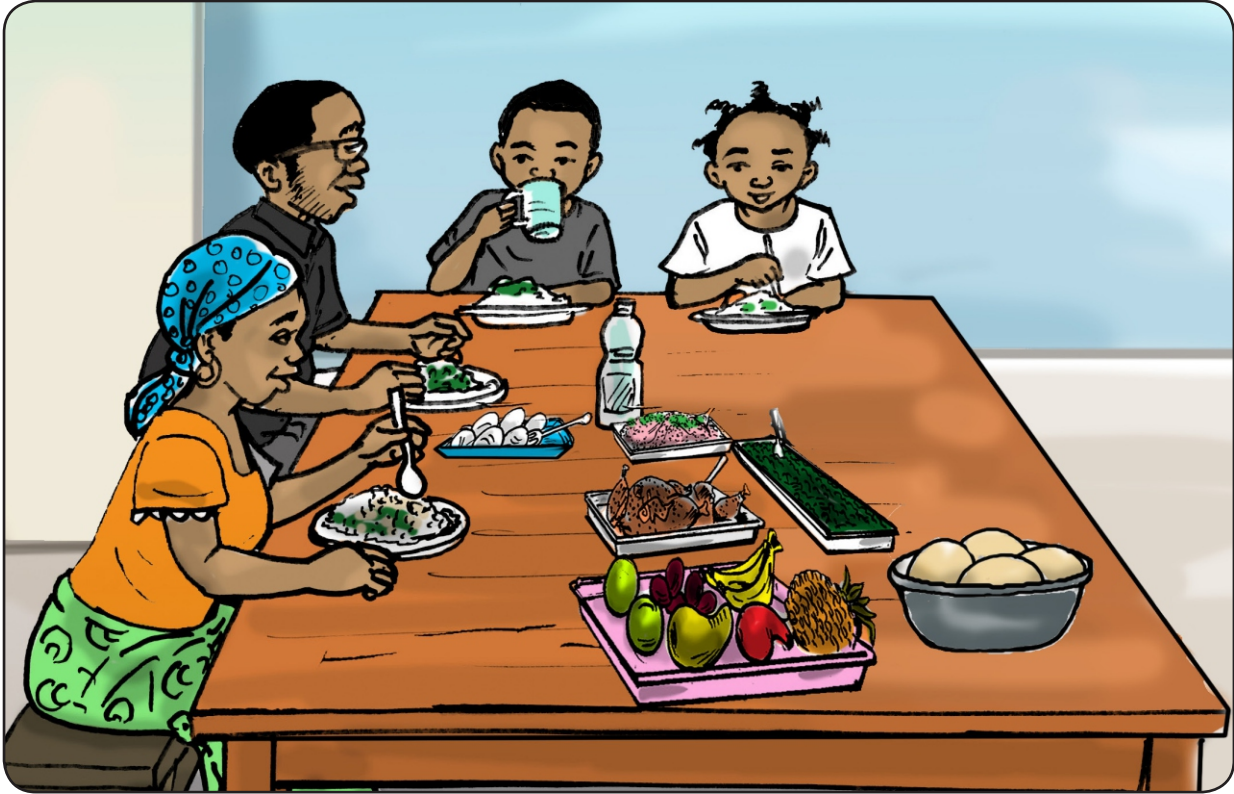


**ETENI YA 2**

**KOBATELA ZINGAZINGA WA  
YO.**

## Mposo ya 8

Nabeti lisolo liye na moto moko o libota.



Nakomi bilei bisato biye nalingaka koliya.

1.

2.

3.



Natii maloba maye mazali na boko na boyike.

Boyike	Boko
Baloni	
Basali	
Bakonzi	
Bayekoli	

Natii maloba maye mazali na boyike na boboko.

Boko	Boyike
Mozimi	
Motomolo	
Moboti	
Mosoni	

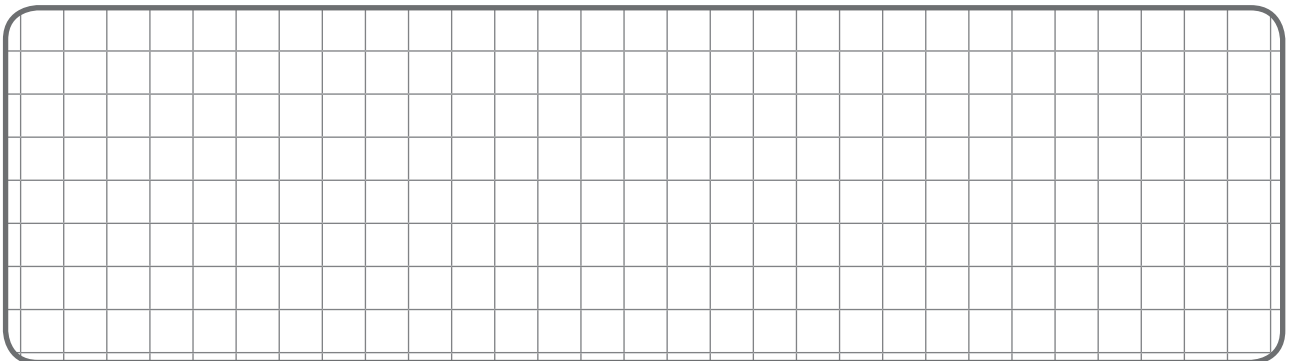
Na maloba maye manso, nazingi liloba liye litali biloko bya koliya te.

Ngaingai
nanasi
kaye
Mosuni
Nsoso

Nakomi lisakola na bilei biye olingaka koliya mpe mpo nini :

.....

Nakomi na lisakola lyoko biloko biye olingaka kolamba :



Nabeti lisolo liye na moto moko o libota.



Nakomi nkombo ya mameli masato nalingaka komele.

1.

2.

3.



Natii maloba maye mazali na boko na boyike.

Boko	Boyike
MoNasali	
Mokano	
Mokolo	
Mokumba	

Natii maloba maye mazali na boyike na boko.

Boyike	Boko
Milangi	
Mitindo	
Misapi	
Mipanzi	



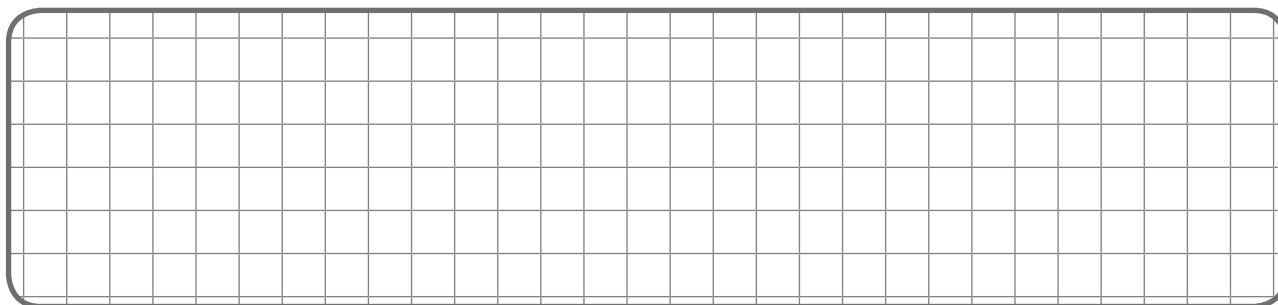
Na maloba maye manso, nazingi liloba liye lizali lya mbuma te.

Lilala
Lipa
Mangolo
Saboka
Etabe

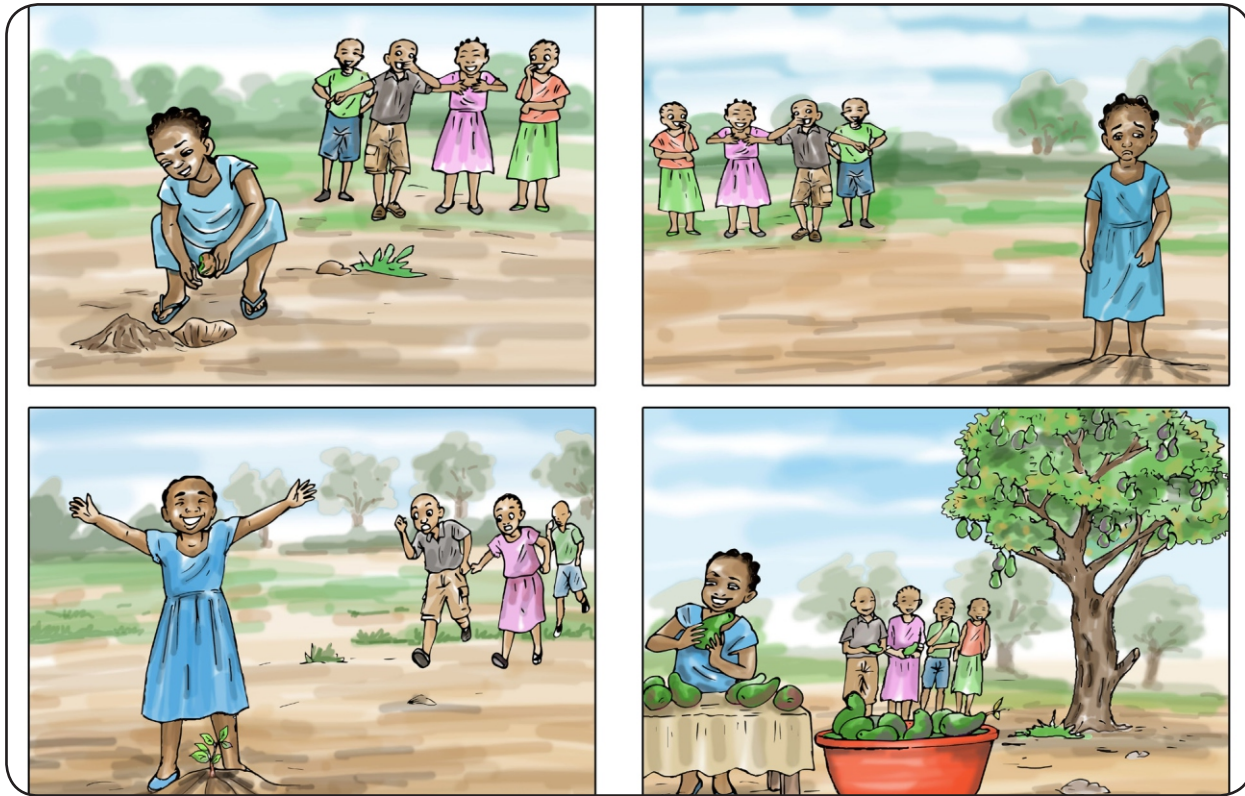
Nakomi nkombo ya mbuma eye nalingaka koliya :

.....

Loba na masakola mabale lolenge kani osalaka mpo ya koliya lilala.



Nabeti lisolo liye na moto moko o libota.



Nakomi nkombo ya nzete isato nayebi.

1.	
2.	
3.	

Natangi lisolo liye.



Natangi.

Elanga ya mama

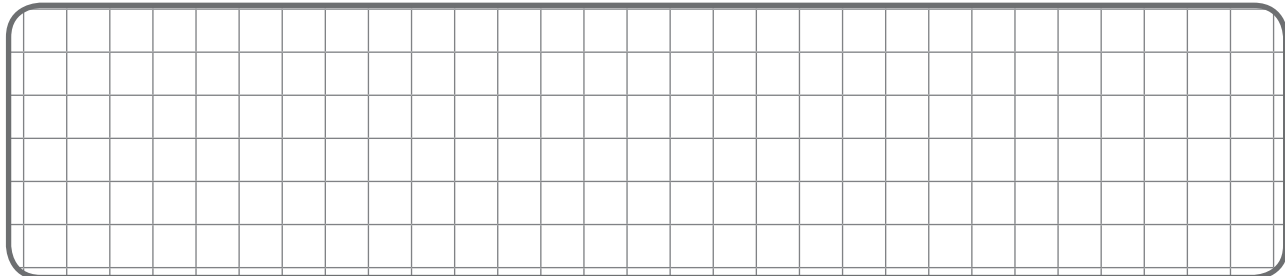
Nsima ya ndako, mama asala elanga.

Elanga ena ezali na tomati, pilipili mpe fulele.

Mikolo minso, mama anyakelaka milona mya ye mai.

Ntongo inso, tata alobaka na Malata : «Buka fulele! Tiya na molangi ! Kitisa na mesa !» Dido asepele mpe alobi : «Yoka nsolo mpimbo!»

Nakomi milona miye mizali o elanga ya mama wa ngai.



Natii maloba maye mazali na boko na boyike.

Boko	Boyike
Ndeke	
Ndako	
Mama	
Tata	

Natii maloba maye mazali na boyike na boko.

Boyike	Boko
Bankumu	
Bandeko	
Banzeneneke	
Baleki	

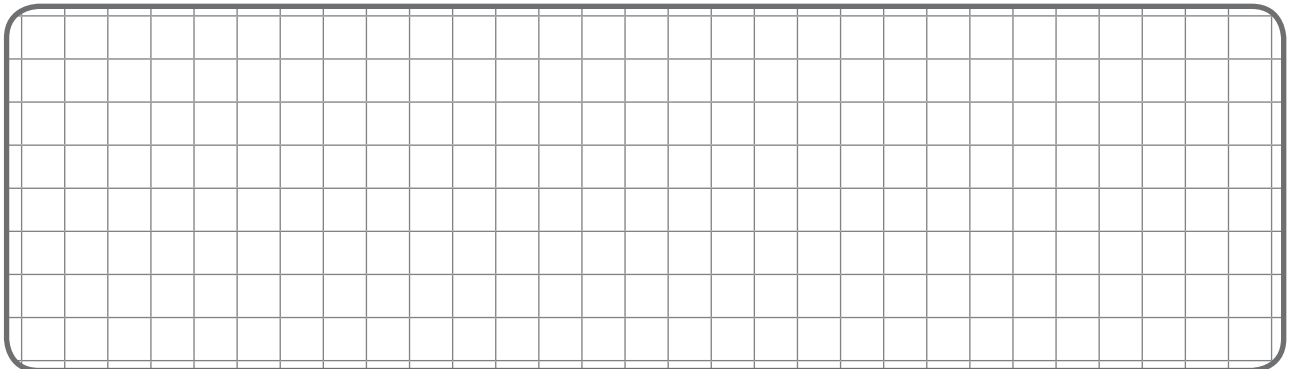
Na maloba maye manso, nazingi liloba liye lizali lya milona te.

Nkoko
Limbila
Dongodongo
Nkasa
Ntaba

Nakomi misala nasalaka na elanga :

.....

Nakomi na masakola mabale lolenge nalonaka ndunda.



Nabeti lisolo liye na moto moko o libota.



Nakomi misala misato mibatelaka zingazinga.

1.

2.

3.



Natali masakola maye mpe natii mondelo na mokonza moko moko ya mango.

1. Baimboka balbwaki mai
2. Mokonzi abengi bango.
3. Bilenge baloni nzete.
4. Dido anyakeli mai na elanga .

Nakomi makonza masato masusu:

1. ....

2. ....



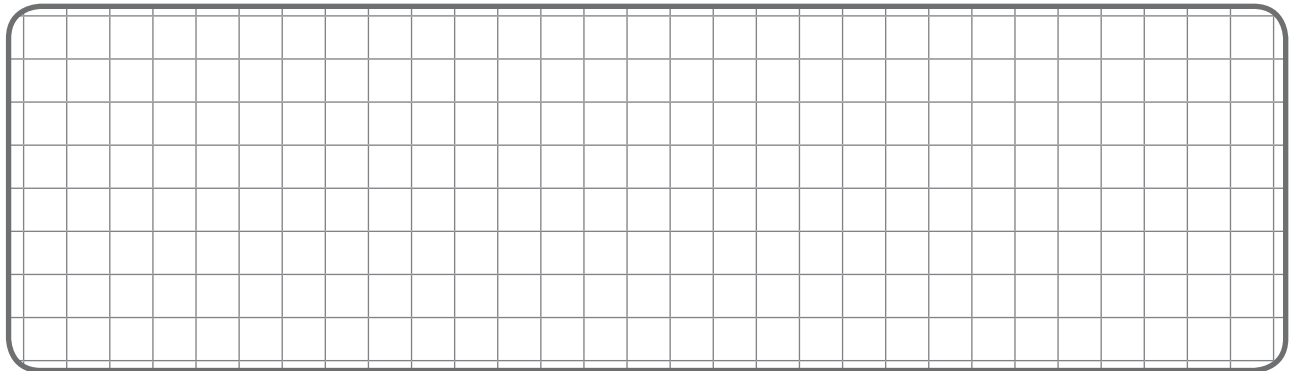
Na maloba maye manso, nazingi liloba liye litali kobongisa nazinginazingi te.

Milona
Limbila
Kolona
Matiti
Kozikisa

Nakomi maye nasalaka mpo ya kobatela zingazinga:

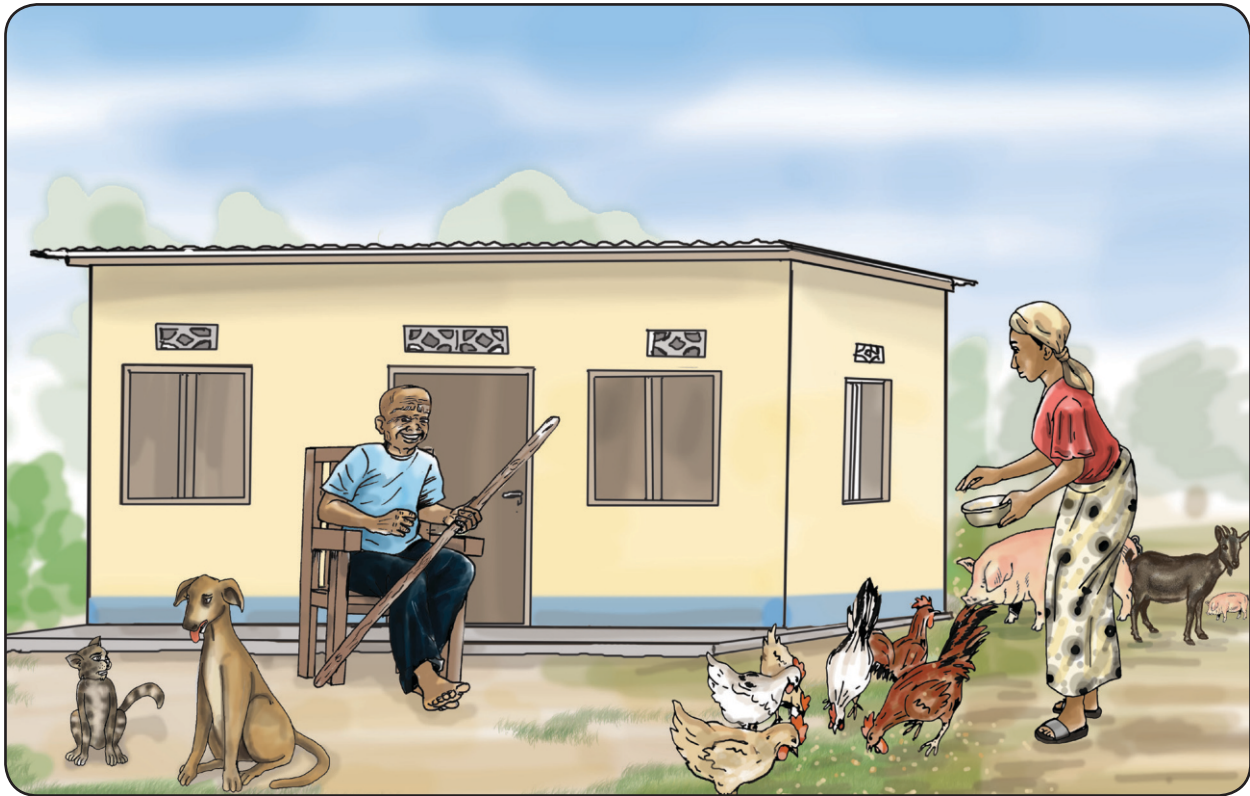
.....

Nakomi na masakola mabale nkombo ya nzete iye olonaki.



## Mposo ya 12

Nabeti lisolo liye na moto moko o libota.



Nakomi nkombo ya nyama isato tobokolaka.

1.

2.

3.

Natangi lisolo liye.



Natangi.

Nsoso ya ngai

Mokolo mwa mbotama ya ngai mobelemi. Noko Sandowa ayei kotikela ngai nsoso ya milulu.

Tata alobi na bokolo nsoso ena tee ebota nsoso isusu.

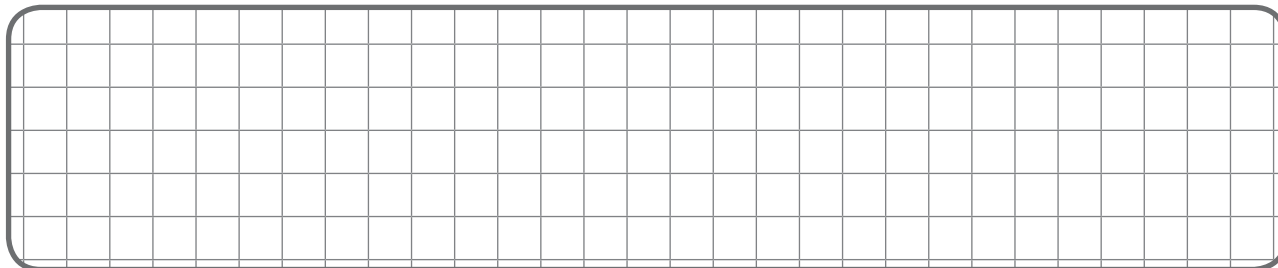
Tata amemi nsoso na elyelo.

Ntongo inso napesaka nsoso mbuma.

Nakoboma yango te, nakobokolo yango.

Tata aseveli na ngai mpe alaki kosunga ngai.

Nakomi ebwele eye bakabela ngai mpe nini nasalaka mpo ya kobokola yango.



Natali masakola maye. Natii mondelo na ekotisi yoko yoko ya mango.

1. Mbwa ezwi ntaba.
2. Mama aleisi nsoso.
3. Libata akweyi na libulu.
4. Ngulu akoti na mai

---

Bakisa masakola na bikotisi miye:

1. Na ntongo, .....

2. Lobi kuna,.....

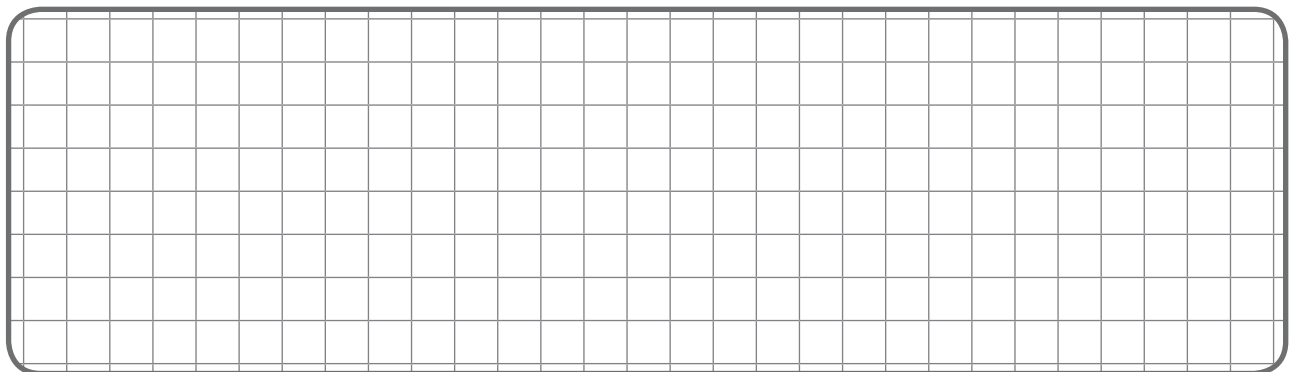
Na maloba maye manso, nazingi liloba liye lizali lya ebwele te.

Ngombe
Lisweswe
Nkondoko
Moi
Montomba

Nakomi nkombo ya nyama bozalaka na yango o ndako :

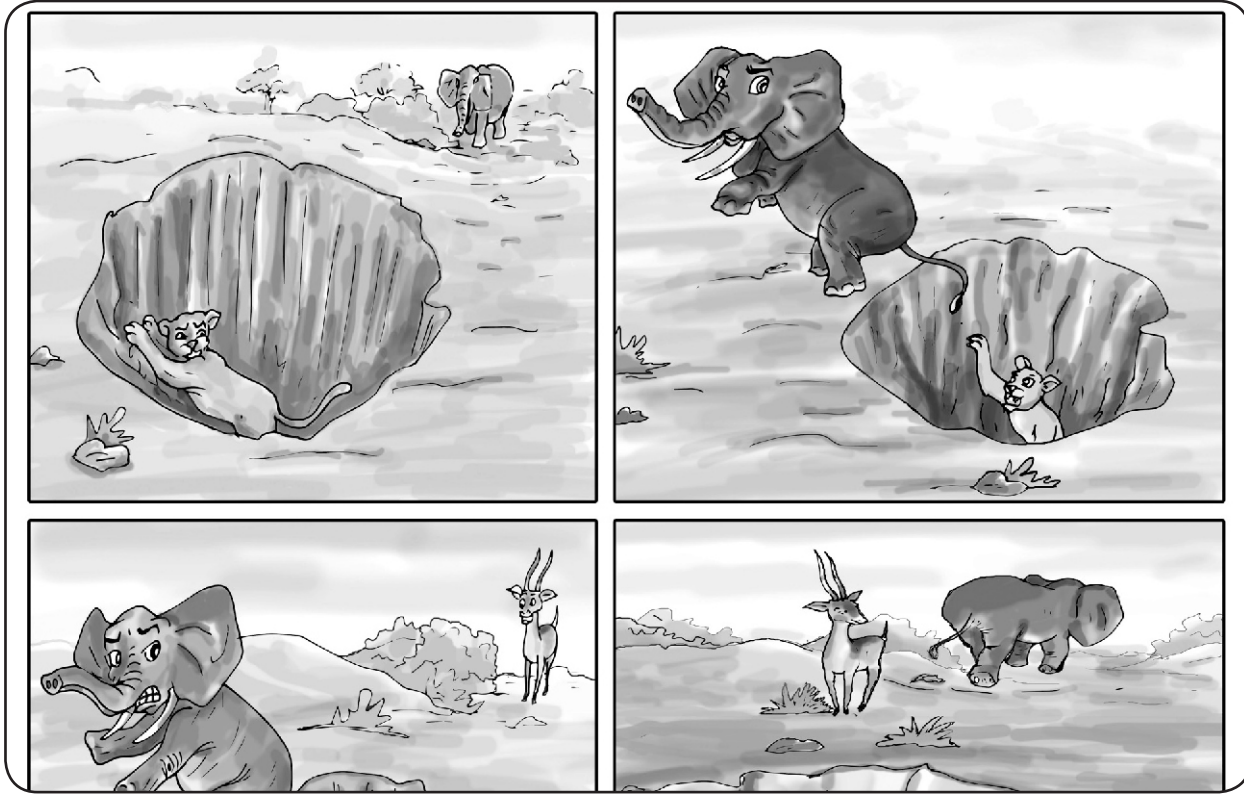
.....

Nakomi na masakola mabale nyama nalingaka kobokolo.



# Mposo ya 13

Nabeti lisolo liye na moto moko o libota.



Nakomi nkombo ya nyama ya zamba isato.

1.	
2.	
3.	



Natali masakola maye mpe natii mondelo na ekotisi yoko yoko ya likelelo.

1. Nguma ememi nsoso likolo lya nzete.
2. Ngubu ebimi libanda lya mai.
3. Nsimbiliki evandi o kati ya lidusu.
4. Montomba ekoti na nse ya mabele.

Nasali masakola mabale mazali na bikotisi bya makelelo.

1. ....
2. ....



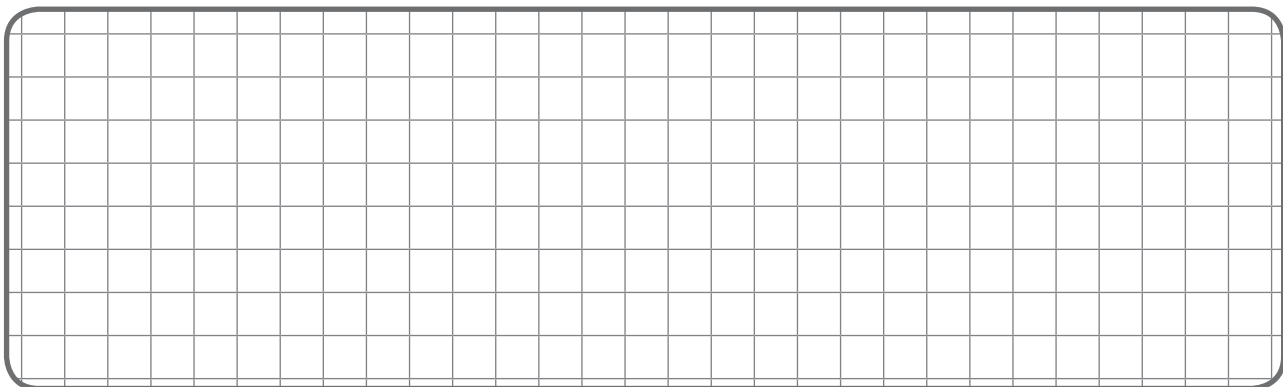
Na maloba maye manso, nazingi liloba liye lizali lya nyama ya zamba te.

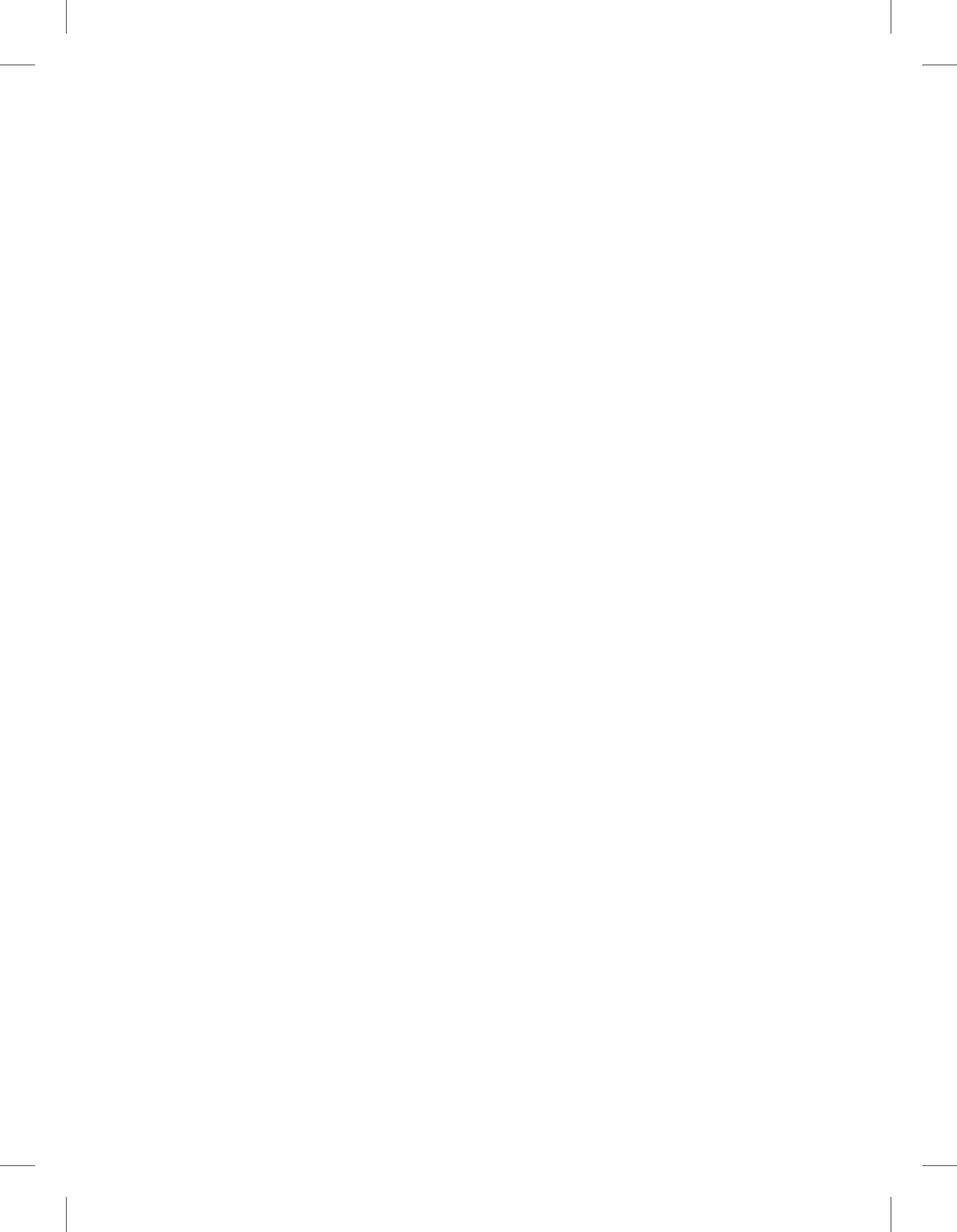
Nzoku
Mbambi
Mbwa
Kulupa
Nsombo

Nakomi nkombo ya nyama ya zamba moko:

.....

Nakomi masakola mabale na maye malekaki mokolo tokendeki kotala nyama ya zamba.

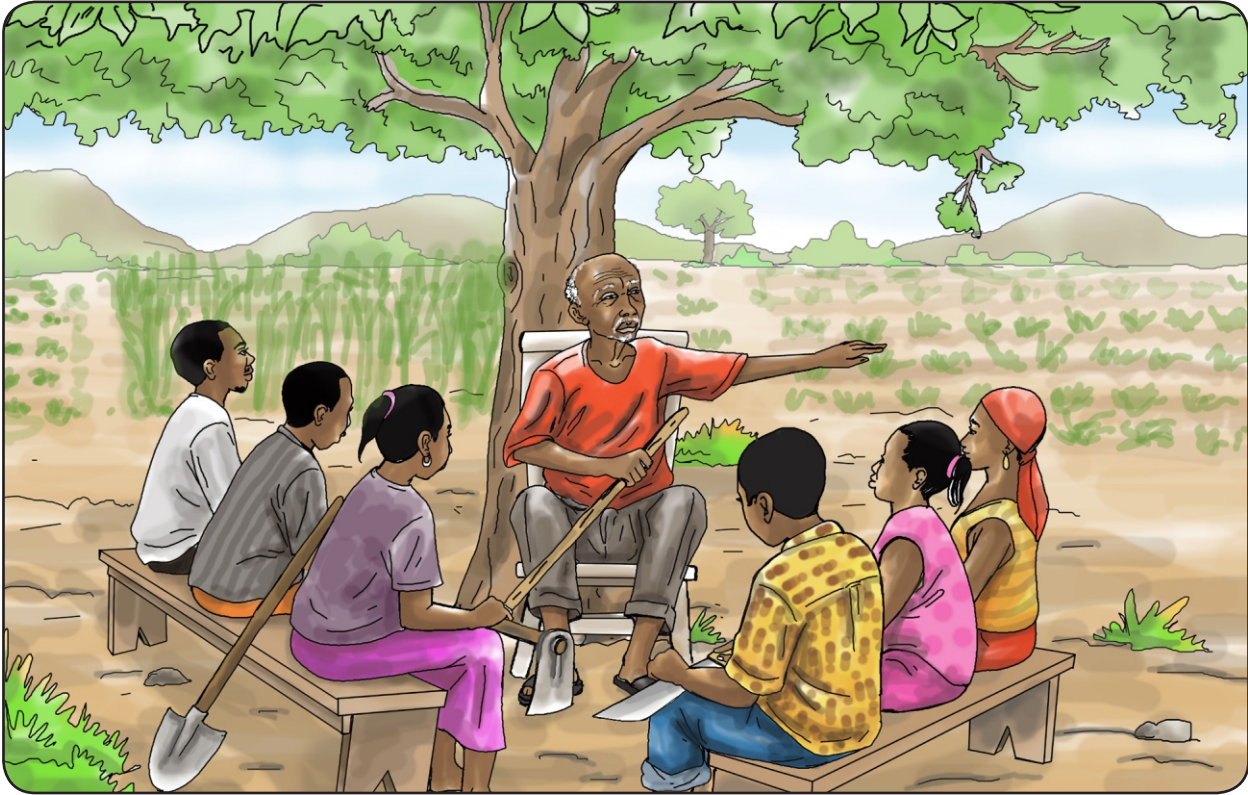




**ETENI YA 3**

**KOTOMBOLA ENGUMBA WA YO.**

Nabeti lisolo liye na moto moko o libota.



Nakomi misala misato nasalaka o elanga.

1.

2.

3.



Natali masakola maye mpe natii mondelo na libakisi lya likelelo.

1. Lelo moi mongengi makasi.
2. Pilipili iteli tosepeli mingi
3. Makemba maboti ebele.
4. Mboto ibimi ebele.



Nakomi masakola mabale mazali na mabakisi ma makelelo.

1. ....
2. ....

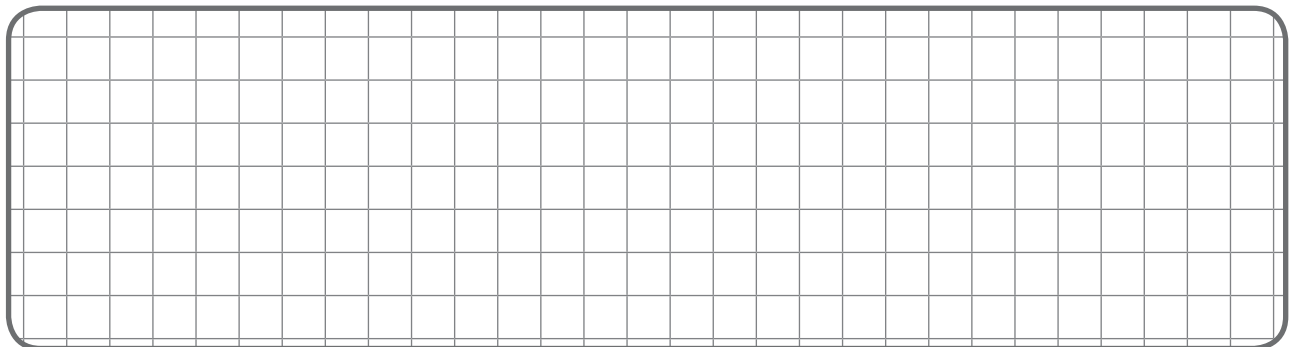
Na maloba maye manso, nazingi liloba liye lizali lya miNasali mya elanga te.

Konyakela
Kotimola
Kolona
Kobwaka
Kobuka

Nakomi miNasali miye nalingaka koNasali o elanga:

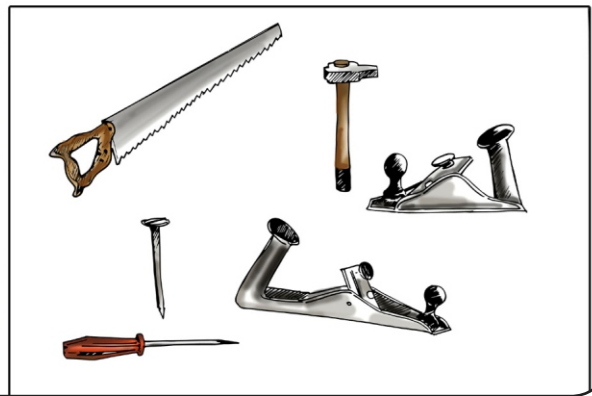
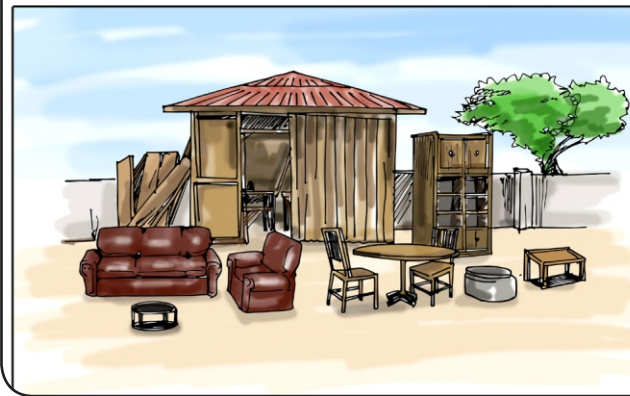
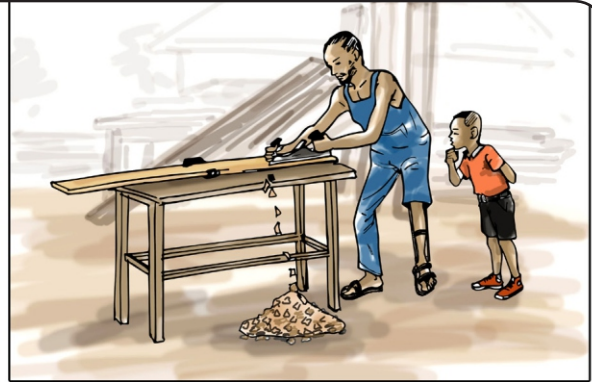
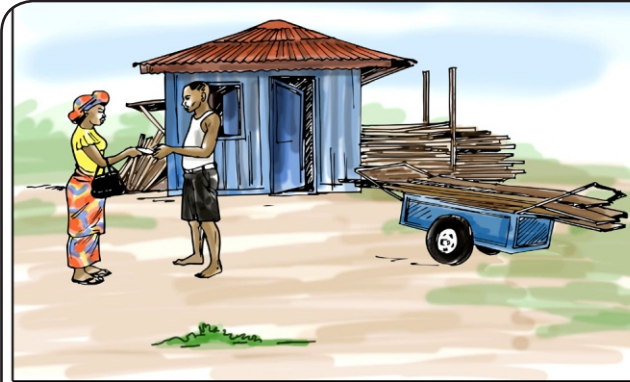
.....

Nakomi na lisakola lyoko lolenge nalonaki mboto



# Mposo ya 16

Nabeti lisolo liye na moto moko o libota.



Nakomi misala mya maboko misato.

1.

2.

3.





Natali masakola maye mpe natii mondelo na matimele .

1. Nkoko asali matunga makasi.
2. Malata atongi etoko na lombango.
3. Kekele izali nzike.
4. Ateki meleke miyike.

Nakomi masakola mabale mazali na matimele.

1. ....

2. ....

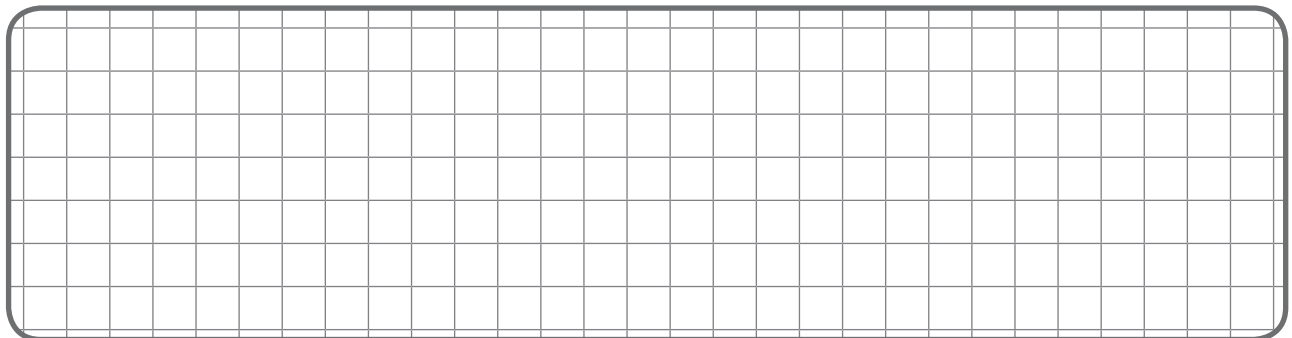
Na maloba maye manso, nazingi liloba liye lizali lya miNasali mya maboko te.

Mosoni
Mokabinda
Moloni
Motuli
Kalaki

Nakomi misala mya maboko olingaka koNasali :

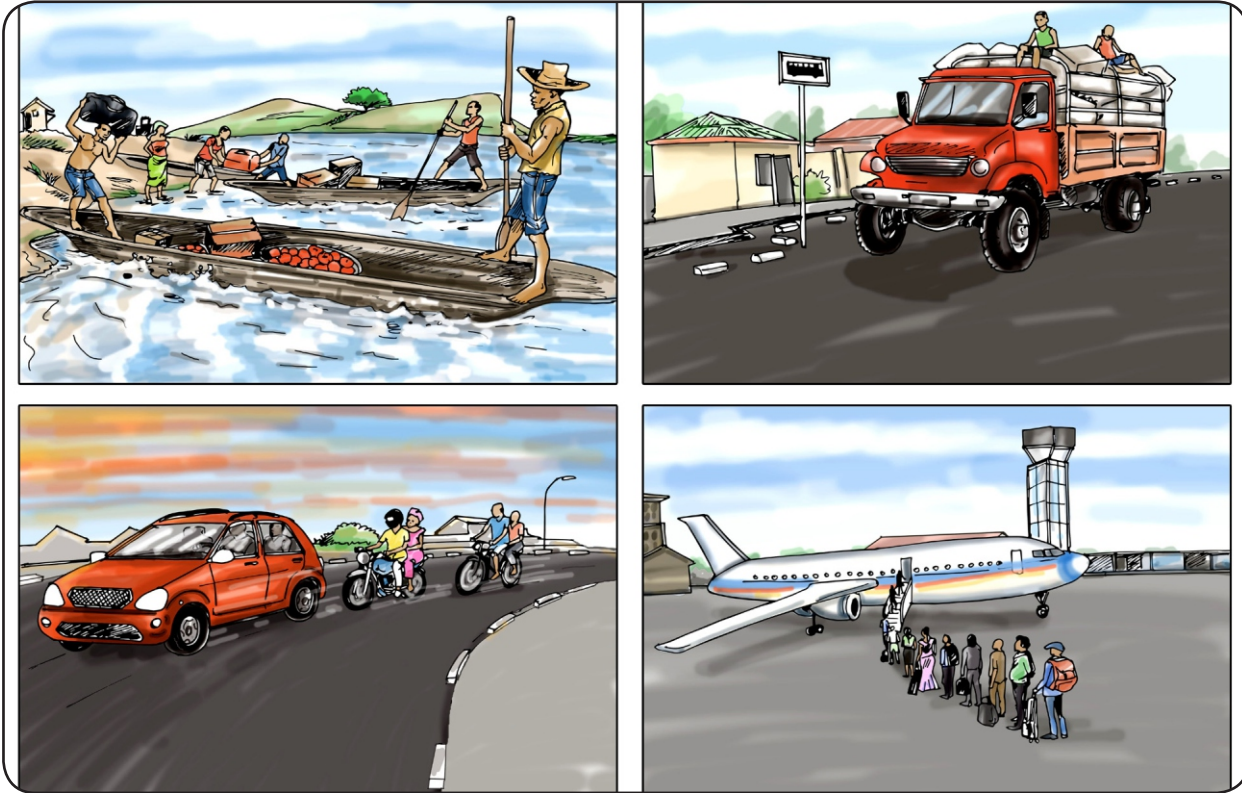
.....

Nakomi na masakola mabale lolenge otongaki elemba ya yo.



# Mposo ya 17

Nabeti lisolo liye na moto moko o libota.



Nakomi nzela isato iye nayebi.

1.

2.

3.



Natali masakola maye mpe natii mondelo na libakema lolenge lyoko lyoko.

1. Malata azali mwana malamumu.
2. Bwato ya tata ezali monene.
3. Nzela inso izali kitoko.
4. Motuka mwa nkoko ezali peto.

Nakomi masakola mabale mazali na mabakema lolenge.

1. ....

2. ....

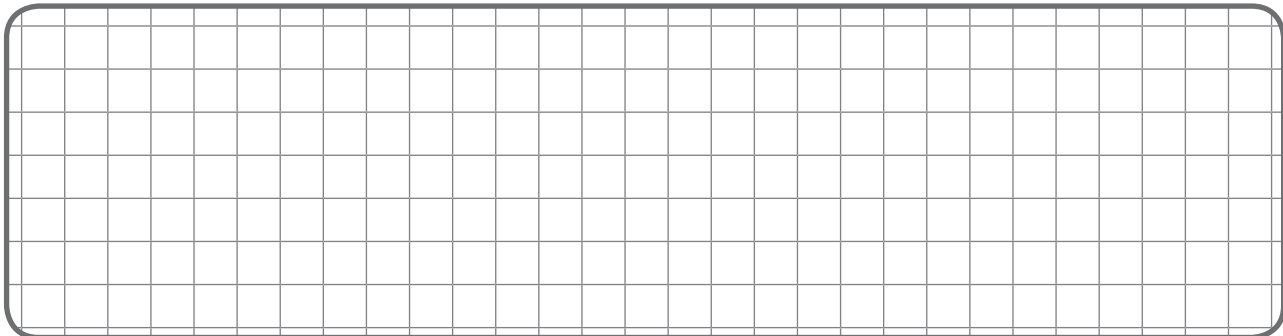
Na maloba maye manso, nazingi liloba liye litali nzela te.

Balabala
Ndako
Nzela
Mai
Matakanelo

Nakomi nkombo ya nzela oyo olingaka koleka:

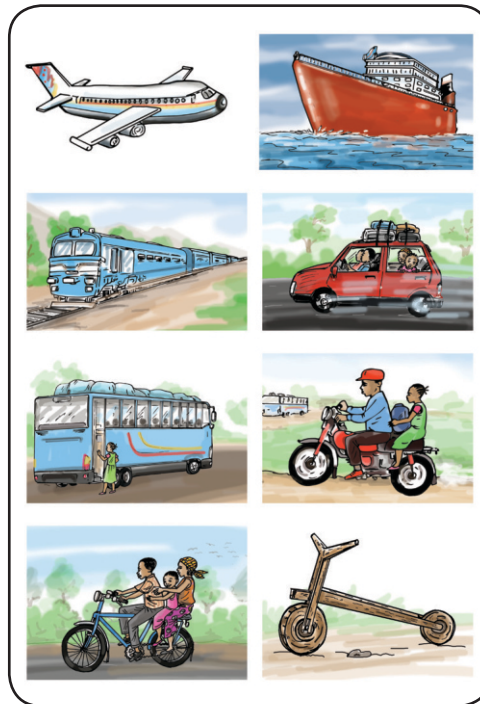
.....

Nakomi na masakola mabale nkombo ya nzela olekaka na ntongo mpo okokende kelasi.



# Mposo ya 18

Nabeti lisolo liye na moto moko o libota.



Nakomi nkombo ya bikumbi bisato.

1.

2.

3.





Natali masakola maye mpe natii mondelo na libakema lolenge .

- 1. Engbunduka ya sika ezali molai.
- 2. Mpepo wana ezali ya mpembe.
- 3. Masuwa esalemi na mabende makasi.
- 4. Nkinga ya Dido ezali montane .



Nakomi masakola mabale mazali na mabakema lolenge:

1. ....
2. ....

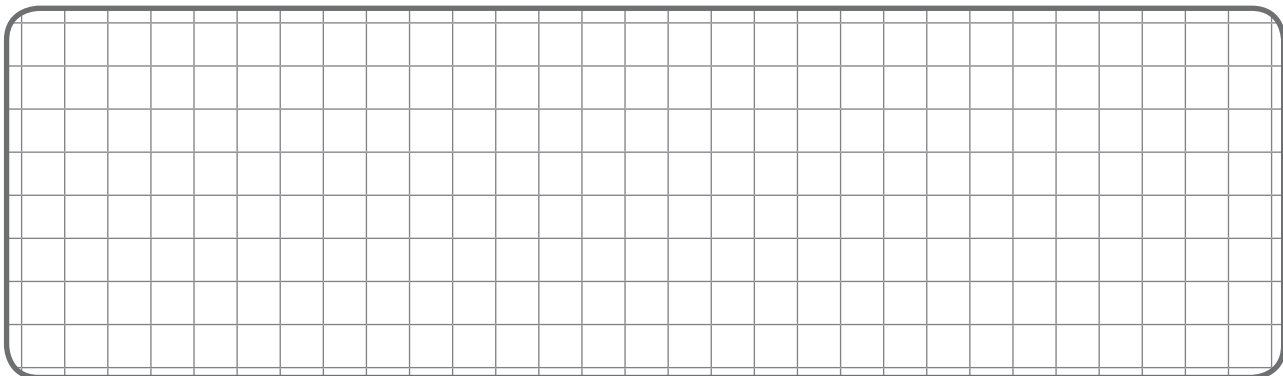
Na maloba maye manso, nazingi liloba liye lizali lya ekumbi te.

Etando
Mpepo
Nkinga
Motuka
Makolo

Nakomi nkombo ya ekumbi olingaka Nakomita:

.....

Nakomi na masakola mabale nkombo ya ekumbi omataka mingi:



# Mposo ya 19

Nabeti lisolo liye na moto moko o libota.



Nakomi masano masato oyebi.

1.

2.

3.

Natangi lisolo liye.



Natangi.

Lisano lya nzango

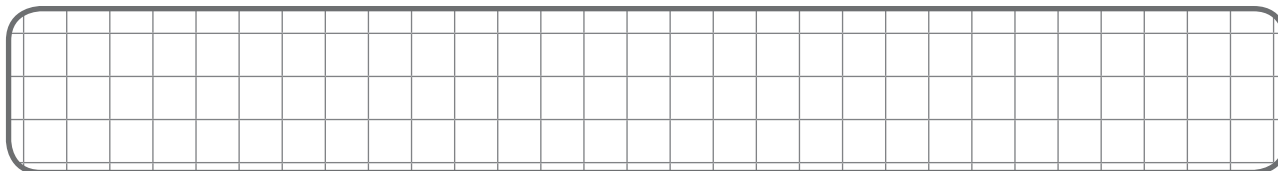
Ngonga ya bopemi ekokomi, banso  
tobimi o lobala. Toyokani tosana na nzango. Tokaboli  
masanga mabale.

Tobandi koyemba mpe kobeta nzango.

Moko moko akopumbwa, banso loyembo o monoko.

Moninga moko alongi baninga banso, tomotomboli  
likoli na esengo.

Nakomi nkombo ya baninga ba ngai nabetaka na bango  
nzango.



Natali masakola maye mpe natii mondelo na bikangya.

1. Bana basani na kebo.
2. Selele ezali esanele.
3. Lola alongi na lisano.
4. Ndembo ezali lisano malamumu.

Nakomi masakola mabale mazali na bikangya.

1. ....
2. ....

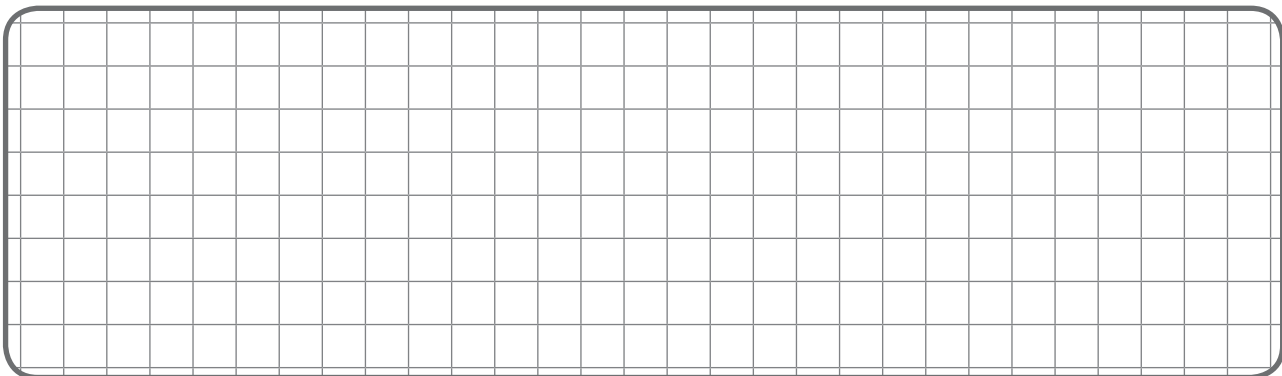
Na maloba maye manso, nazingi liloba liye lizali lya nkombo ya lisano te.

Kukule
Sekele
Lilala
Silikoti
Ndembo

Nakomi nkombo ya masano olingaka :

.....

Nakomi na masakola mabale nkombo ya masano osanaki na baninga.







Natangi lisolo liye.



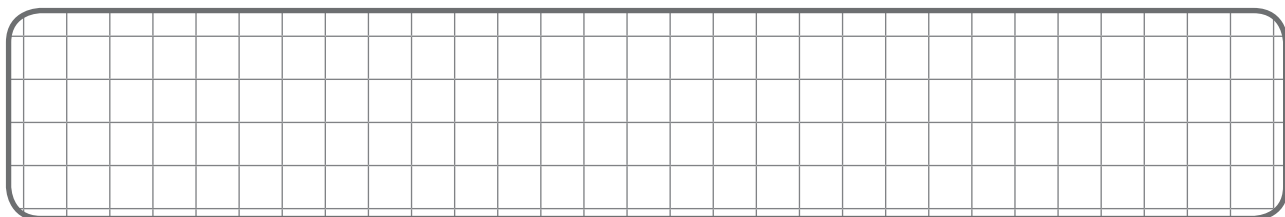
Natangi. Lisano lya bopoti mbangu

Molakisi alobi tosala lisano lya bopoti mbangu. Babale na babale bakosala momekano.

Dido na Lili bakopota bato ba yambo. Molakisi apesi ndingisa, babandi kopota.

Biso banso, tozali koganga mpo na molongi. Bango babale bakomi elongo, tobayambi.

Nakomi nkombo ya baninga ba ngai nasalaka na bango lisano lya bopoti mbango.



Natali masakola maye mpe natii mondelo na bikangya.

1. Bango banso bapoti mbango.
2. Asani tee alembi.
3. Lili abeti ndembo na baninga baye.
4. Kukule esili bakeyi kolala.

Nakomi masakola mabale mazali na bikangya.

1. ....

2. ....

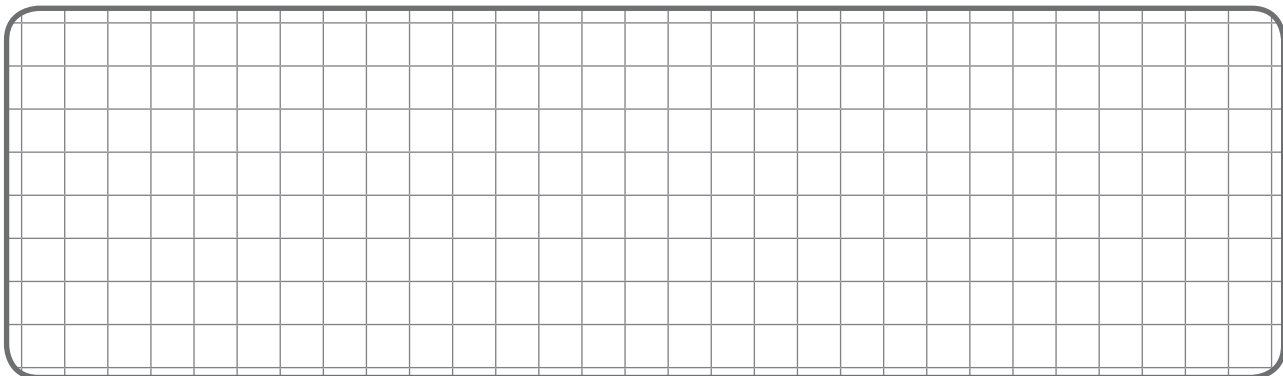
Na maloba maye manso, nazingi liloba liye lizali nkombo ya esanele te.

Moto
Ndembo
Silikoti
Sekele
Kaka

Nakomi nkombo ya bato nalingaka kosana na bango :

.....

Nakomi na lisakola nkombo ya bato nasanaki na bango mpe nkombo ya lisano bosanaki .



Ce cahier de lecture a été conçu et imprimé grâce à l'appui généreux du peuple américain et du peuple britannique, à travers l'Agence des Etats-Unis pour le Développement International (USAID) et le Ministère Britannique de la Coopération Internationale (DFID/UKAID).

---



**USAID**  
FROM THE AMERICAN PEOPLE

