



Ministère de l'Enseignement Primaire,
Secondaire et Professionnel

KOTANGA MPE KOKOMA

Buku ya moyekoli

LINGALA

2



KOTANGA MPE KOKOMA

Buku ya moyekoli



Direction des Programmes Scolaires et Matériel Didactique

LIKWE LYA BUKU

MALOPA MA YAMBO	1
BOKOTISI O BUKU G.....	
. 2	

ETENI YA 1 : KOMIKOTISA O ZINGAZINGA WA YO

Bozongi kelasi	4
Botosi	14
Libota like	24
Bato ba penepene	30
Ndako ya libota	36
Mboka	42

ETENI YA 2 : KOMIBATELA

Biteni bya nzoto	50
Bopeto bwa nzoto	54
Bilamba bya basi, bya babali mpe bana	58
Lolenge mpe langi la bilamba	62
Masano ma moto moko	66
Masano ma masanga	70

ETENI YA 3 : KOBIKA ENGBENE YA BILEKO MPE YA MISALA MYA ZINGAZINGA WA YO

Mokolo - Mposo - Sanza	76
Bileko	80
Bato ba zando mpe misala mya bango	84
Masolo o zando mpe biloko bya koteka	88
Mbota - Batisimo	92
Loi - Bokei - Misala	96

Maloba ma yambo

O nsuka ya mobeko mwa mitano (5) mwa mibeko mya bokambi boteyi o kati ya Lepibiliki Demokalatiki ya Kongo, ezali na lisengami linene lya botombwami na mobimba mpe na bolamu bwa moto moko oyo azali kopesa ntina mpe na bokitisi ye o kati ya molongo mwa bato.

Mpo ya kokokisa lisengami lina , moyekoli wa mboka Kongo asengeli o nsuka ya eteyelo ya yambo kozala na likoki lya kotanga, kokoma, kotuya, kotongolo ntina mpe koloba na lokota la mboka mpe na lifalase.

Kasi, lelo moyekoli, o nsuka ya eteyelo ya yambo, azali kokutana na mikakatano ebele mpo ya botangi mpe bokomi ; mpe makoki maye azwi na mambi ma eteyelo makomi naino te o esika eye mokili mobimba moyebi.

Makambo maye matalisami na mimekano ndenge na ndenge o ekolo Kongo (TENAFEP) lokola mpe mya mokili mobimba (EGRA) bolongi boke o mimekano miye bomonisami o kati ya mateya maye mamonisami lokola ntina mpenza ya bozwi boke bwa makoki ma bayekoli na botangi mpe bokomi. « Boyebi bolamu bwa botangi mpe bokomi bozali kotikala mpenza nzela esengeli mpo ya kobongisa mateya malamau o kati ya mambi masusu ma boteyi.

Mpo ya kobongisa likambo lyango, Minisitele ya mateya ma yambo, ma ntei mpe ya misala mya maboko, azwi mikano mya makasi mya ntina miye mizali mpo ya kobongisa boteyi mpe boyekoli bolamu, na bongo, na botomboli botangi mpe bokomi o molongo mwa mateya manene...

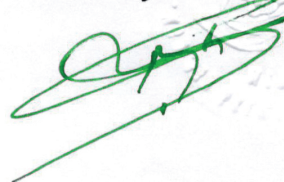
Mpo na yango, Minisitele ya mateya ma yambo, ma ntei mpe ma misala mya maboko ezali kokumisa lisalisi liye liwuti epai ya bandeko basusu na biloko bya misala mpe misolo mpo ya bobongisi boyekoli bolamu mpe ya bobongoli ndenge ya botangisi o ekolo Kongo.

Buku iye isalemi na boyangeli bwa molongo mwa mateya mpe bisaleli bya mango [DIPROMAD] na lisungi lya basalisi baye bazali mpo ya boteyi mpe boyekoli botangi mpe bokomi na nkota ya mboka. Ezali mpenza buku ya minisitele ya mateya ma yambo, ma ntei mpe ma misala misala mya maboko, mpe ipesami na bayekoli mpe na balakisi ba kelasi ya yambo, ya ibale, mpe ya isato o biteyelo binso bya yambo bya leta mpe o biteyelo bya bato bango moko biye bindimami na leta. Bakomiyingisa mpenza na bobongisi boteyi mpe boyekoli.

Balakisi babali mpe basi basengeli kotanga na bozindo buku iye ya motuya mbala na mbala, basengeli kosalela yango na ndenge ya malamau mpo ya bolamu bwa bayekoli .

Gaston MUSEMENA BONGALA

*Minisitele ya mateya ma yambo, ma ntei mpe ma
misala mya maboko*



BOKOTISI O BUKU

Mwango ACCELERE ! eye ekambemi na USAID ekosunga engumba Congo na mambi matali botombwami bwa lolenge la mateya mpe boyekoli. Mingi mingi na boyekoli kotanga mpe kokoma o kati ya biteyelo bike.

ACCELERE ! amipesi mosala to mbela ya kopesa bayekoli makoki ma ntina mpo ya boyekoli kotanga mpe kokoma o nzela ya nkota isato : lingala ; kiswahili mpe tschiluba.

Kokoma buku mpe kaye ya botiyi mayele mpo ya bayekoli , mpe buku ya balakisi ezali mosala mwa bokundoli bwa zebi ya sika mpenza mpe makambo ma solo.

Tala ntina kaye eye esengeli kokota na molongo mwa buku ya engumba mobimba, ekambemi na bitapi. Bakosalela yango kaka o ndako. Kaye ekosalisa moyekoli na kosala misala mya ndako soko ayekoli o kelasi. Tokosenga na bino na kopesaka moyekoli minuti ntuku isato na mokolo mpo ya kosunga ye mpo ya botiyi mayele bwa mokolo na mokolo :litangi mpe galamele.

Mpo ya botiyi mayele na mambi matali litangi, mwana wa bino akotangela bino litangela lya mbula ya ye mpe akolimbola lyango.

Mpo ya botiyi mayele na mambi matali galamele makokambema na boyekoli lokota : koluka ezaleli ya liloba, nkondo ya nkombo, kotia nkombo na boyike to na boko...

Mwango ACCELERE ! etondi botondi mingi na baye banso basungi mpo ya bokomi bwa buku eye ya mateya : bakambi ba mwango mwa biteyelo mpe bisalelo bya mateya (DIPROMAD), mosala mwa engumba mpo ya mateya (SERNAFOR), bilo ya bakambi balakisi (IG), bilo ya bolandeli mbongwana mpe mayele masika ma botangisi, bato ba mayele ba kelasi ya likolo(UNIKIN, UPN,CELTA...)

Buku eye ezali na ntina mingi mpo ya moto nionso akosalela yango.

ETENI YA 1

**KOMIKOTISA O ZINGAZINGA
WA YO.**

Eteyelo

Bozongi kelasi

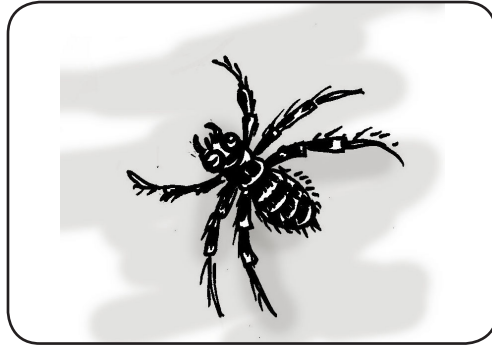
Natali mpe nalobi.



Natangi

a

a

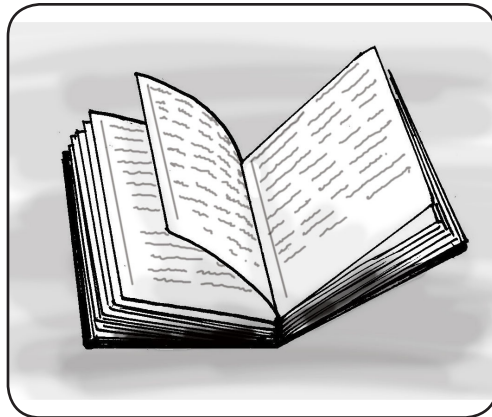


Alulu

A
A

b

b



Buku

B
B

Natangi

a A b B

a A b B

B a b B

A B A b

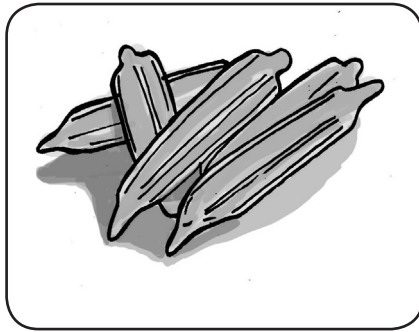
b a B a B

b A B A

Natangi

d

d



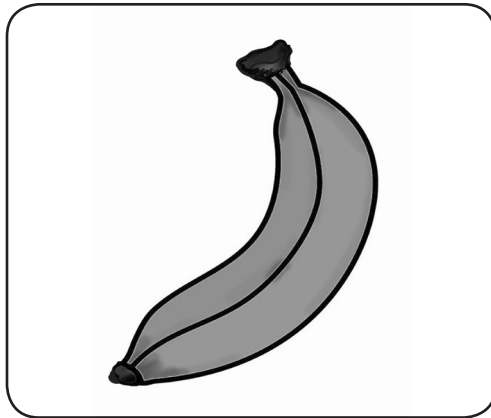
Dongodongo

D

D

e

e



Etabe

E

E

Natangi

d D e E

d D e E

D e d f

D e d e

b a D e B d B E b A e

Natangi

f

f



Fololo

F

F

g

g



Galasisi

G

G

Natangi

g G f F

g G f F

G f F g

G f g F

b a G f d B g B E J b

A f A

Natangi

i

i



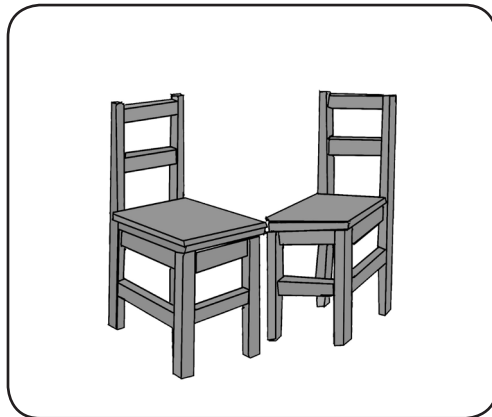
Ina

I

I

k

k



Kiti

K

K

Natangi

i I k K

i I k K

G f F g

G f g F

b a G f d B g B

E I b A f A

Alifabeti

Natangi

A B d e f g i K

l F g d A K e f i B

f	a	B	D	i	E	e	e	A	b
d	G	E	A	L	e	F	k	L	K
K	d	B	D	l	f	a	b	B	l
g	K	d	k	A	G	i	d	D	g

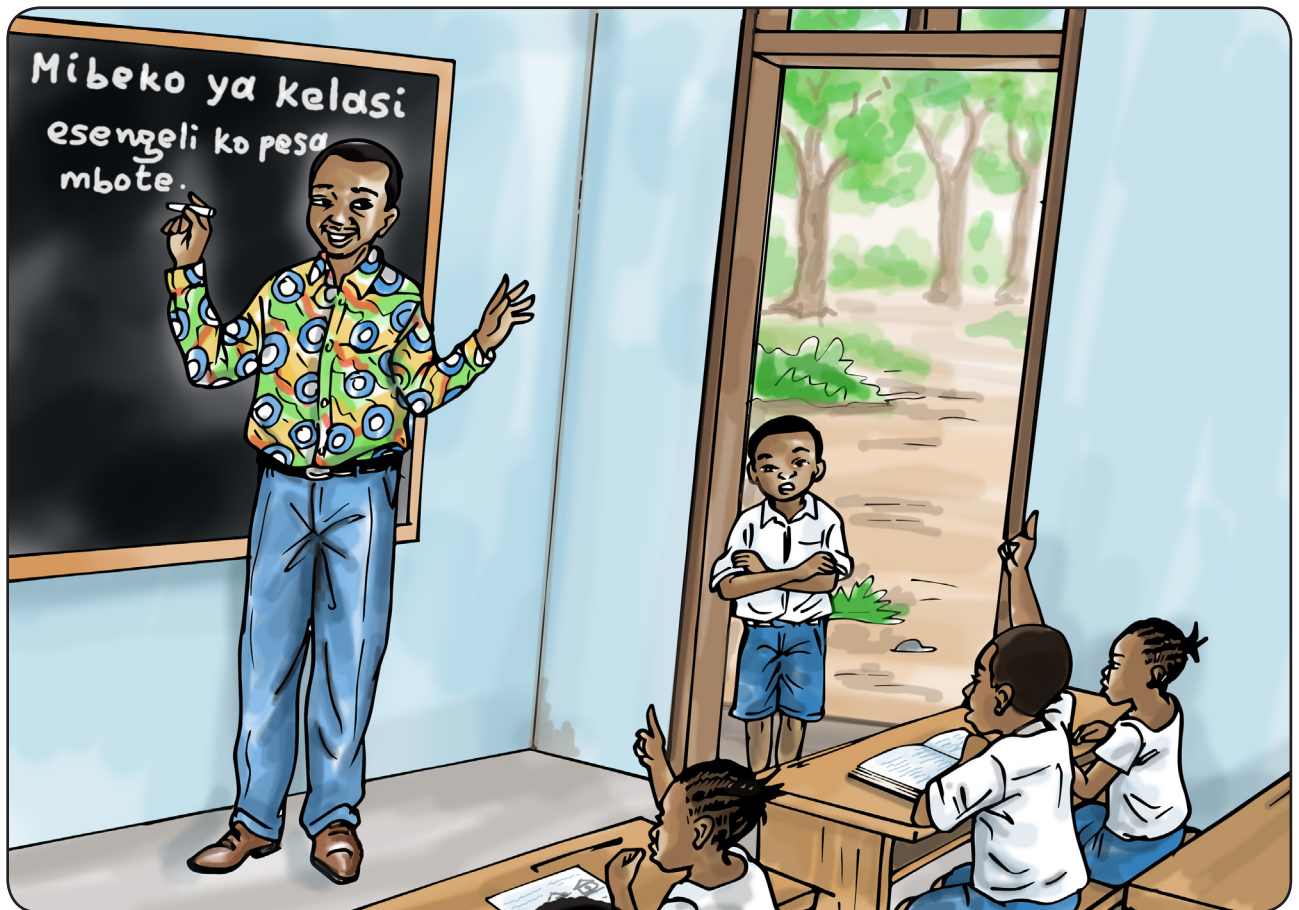
Nakomi

A	B	d	e	f	g	i	K	l	F	g	d	A	K	e
f	i	B												

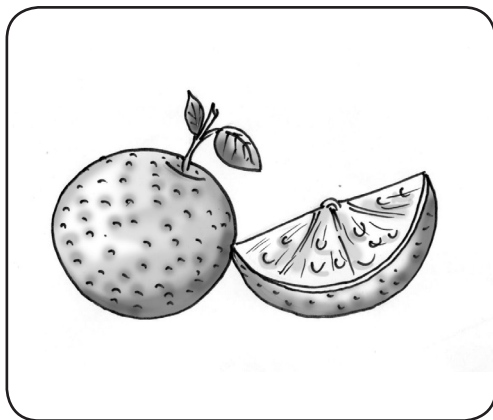
Eteyelo

Botosi

Natali mpe nalobi.



l
l



Lilala

L
L

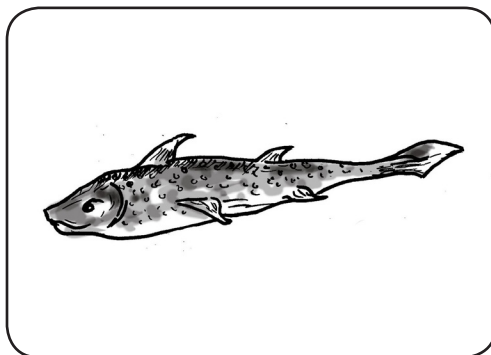
m
m



Mama

M
M

n
n



Nina

N
N

Natangi

l L m M n N

L l M m N n

n m l M n L

L n M l N m

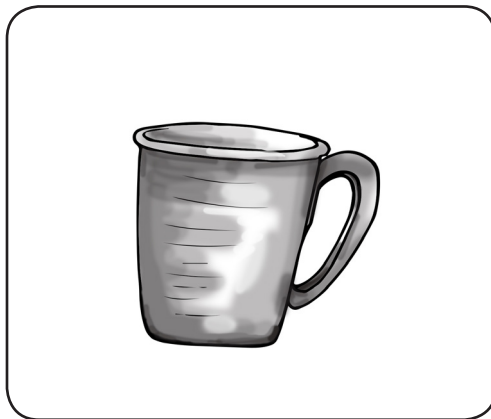
L b a G f d n B g B

E m J b A f A

Alifabeti

o

o



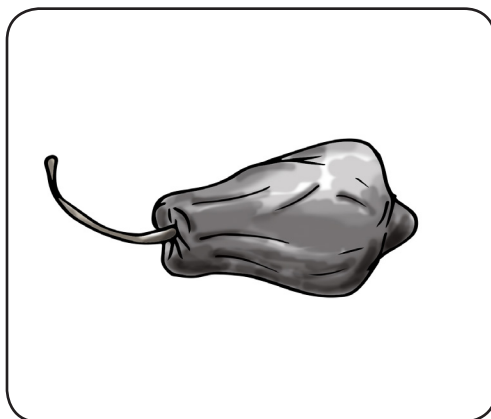
Kopo

O

O

p

p



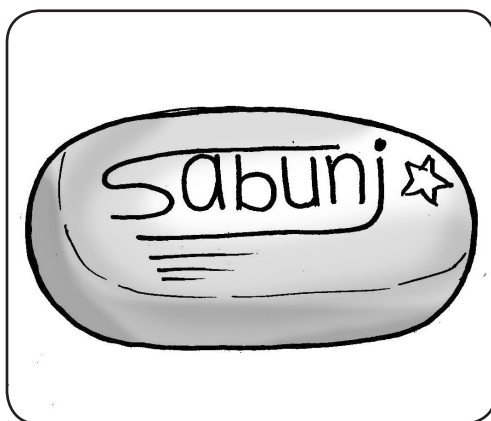
Pilipili

P

P

s

s



Sabuni

S

S

Natangi

o O p P s S

o O P p S s

p s P o S O

P o P O p s

L b o G f d n B g B o

E m J P A f A

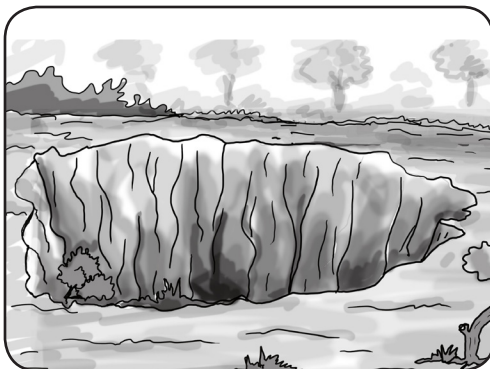
t
t



T
t

Tomati

u
u



U
u

Libulu

v
v



V
v

Valizi

Natangi

t T u U v V

t T u U v V

V t u T v U

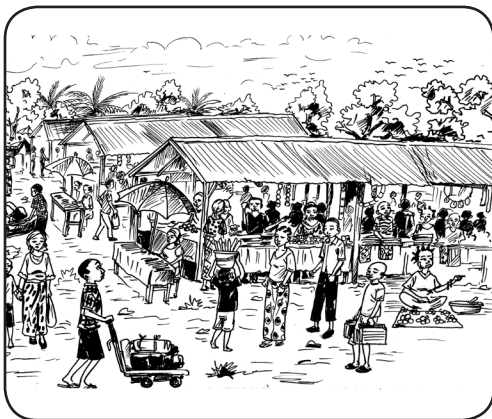
u v T V U t

L u o G f t n B g B o

E m J P A v A

W

w



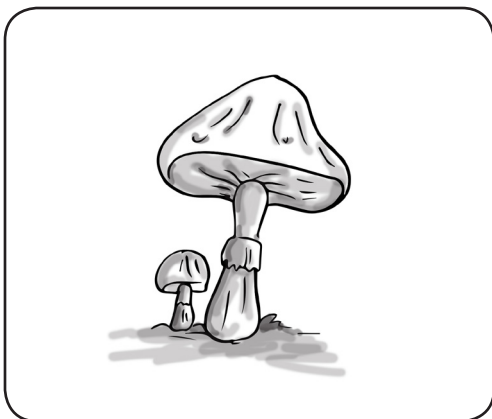
Wenze

W

W

y

y



Liyebo

Y

Y

Z

Z



Zolo

Z

Z

Natangi

w W y Y z Z

w W y Y z Z

W z Y w Z v

Z y z w y

W u o v G f t n v g B

o E m J P Y v A

Alifabeti

Natangi

A B d e f g i K l m n o p s t f v W
y z l F s v g d l A K o e f

f	w	B	s	i	Z	e	e	A	b
d	G	o	A	L	e	F	p	L	K
K	d	U	D	e	f	a	b	B	l
g	K	y	k	v	G	i	d	t	g

Nakomi

A B d e f g i K l m n o p s t f v W y
z l z F s v g d l A K o e f

Libota

Libota like

Natali mpe nalobi.



Natangi

i i o o l l m m
lo mi li mo
Milolo Moi Molimo
Lili, molili.

Nakomi

I o m l
... ..

lo mi mo li
... ..

Mimi Lili Mololo
... ..

Natali



Natangi

Molili.

Milolo Lili.

Milolo

Natangi

a a f f e e b b
fa be la me

Fololo Mabele

Mama aloni fololo.

Nakomi

a f e b

... ..

fa be la me

... ..

Fololo Mabele

... ..

Mama aloni fololo.

.....

Natali



Natangi

Malili

Lili amemi fololo.

Fololo ebebi.

Nakomi

Lili amemi

Natangi

i l o m e b a f

fe mo li ba fi me la lo

Bifelo Mai Balabala.

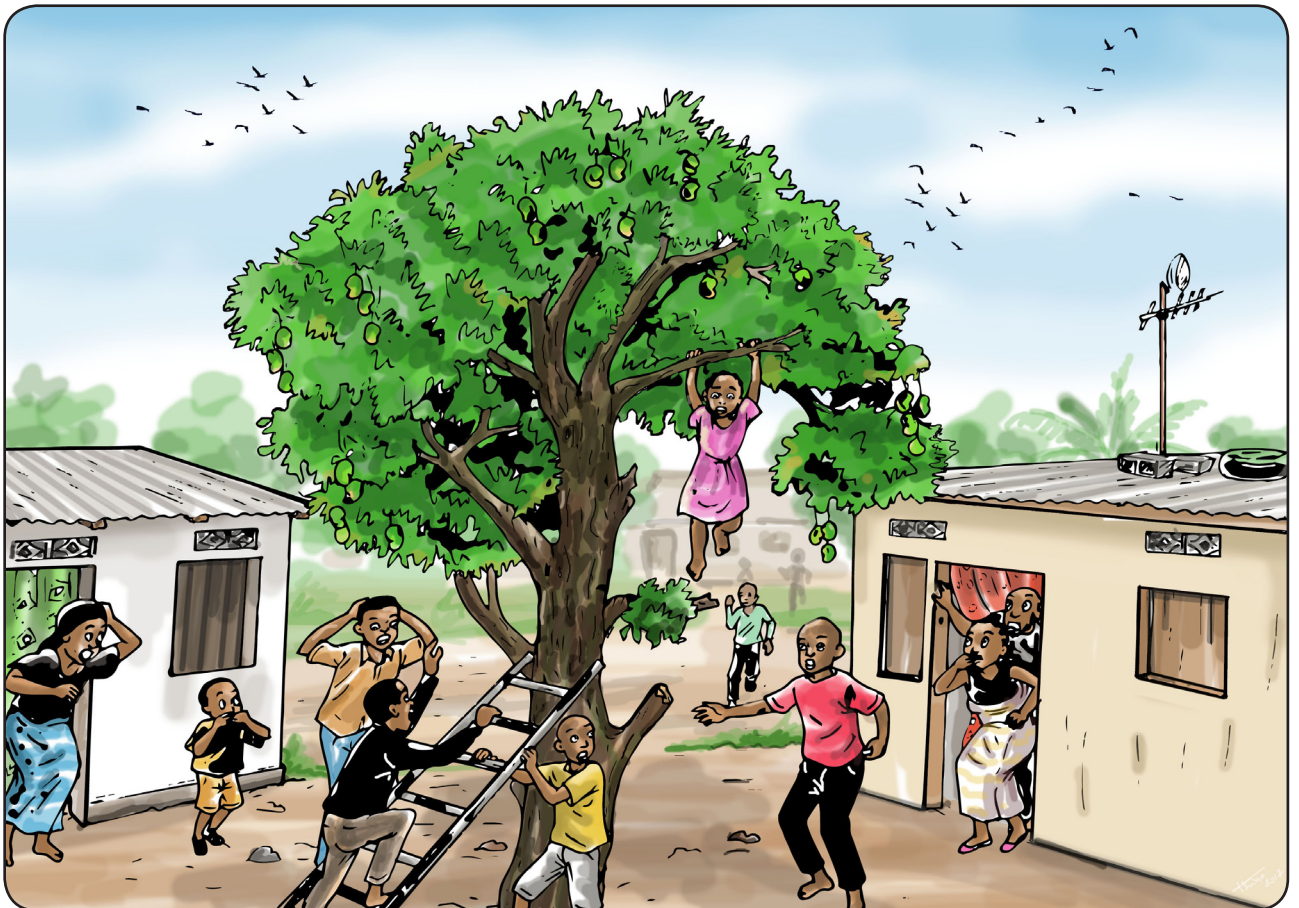
Nakomi

O libota lya biso, tozali bato ...

Libota

Bato ba penepene

Natali mpe nalobi.



Natangi

u u k k d d n n

bu ke du ne

Nina Ekuke

Nani abeti ekuke.

Nakomi

u k d n

... ..

bu ke du ne

... ..

Nina Ekuke

... ..

Nani abeti ekuke.

.....

Natali



Natangi

Na lobala

Na lobala, Lili abuki lilala.

Na lobala, Lili alei lilala.

Na lobala, alei lilala na Doku.

Nakomi

Na lobala, Lili ... lilala.

Natangi

s s t t y y p p

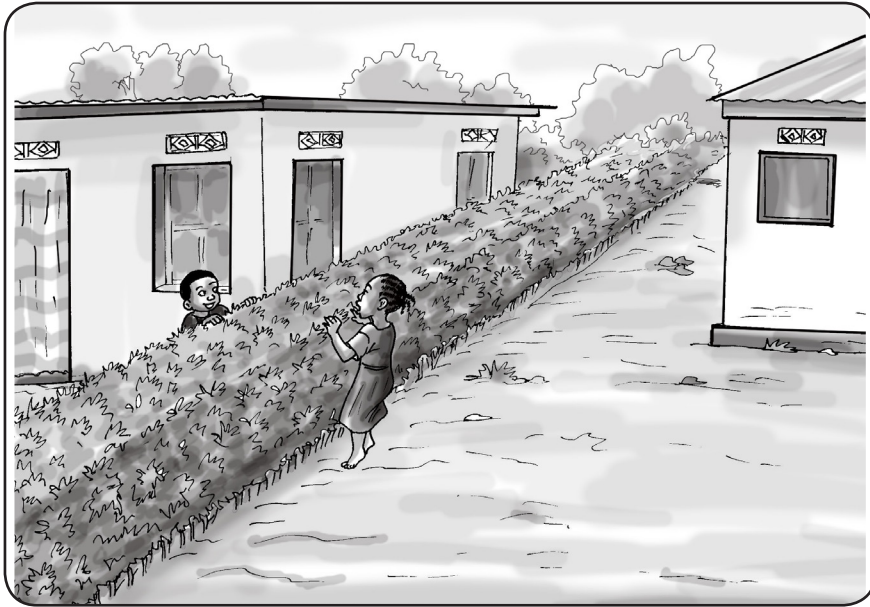
Penepene Motomolo

Motomolo amemi mozimi.

Nakomi

Motomolo amemi

Natali



Natangi

Tala epai ya Lola

Tala epai ya ye penepene ya biso.
Tala bobele fololo ikaboli biso.
Tobikaka na boboto.

Nakomi

Tobikaka na

Natangi

u k t d y p n s

po ki du ye sa

Motomolo Mosika Penepene

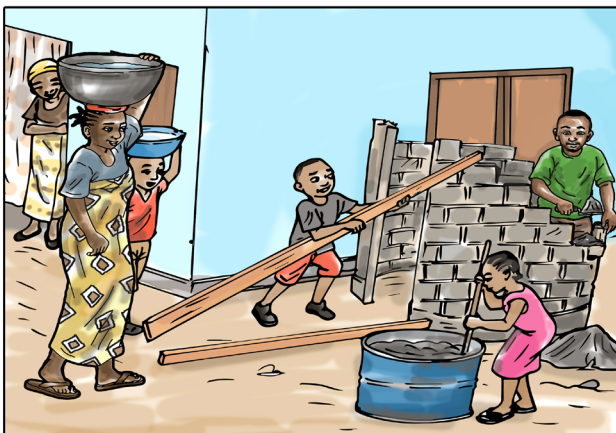
Nakomi

Nafandaka penepene ya

Bifandelo

Ndako ya libota

Natali mpe nalobi.



Natangi

w w v v g g z z

wu ve ga zo

Wumela Valizi Galasisi Zala
Mama amemi valizi.

Nakomi

w v g z

... ..

ze wa gu vi

... ..

Zala Gemena Velo Zaina

... ..

Zaina akei Gemena.

.....

Natali



Natangi

O zelo

O zelo, Lili alali.
O zelo, Lili ayemi.
O zelo, Lili asani.
O zelo, basani.

Nakomi

O zelo, Lili

Natangi

nz nz mw mw kw kw gb gb

nzu kwe mwo gbi

Nzela Mwese Gbagba

Gbagba ezali na nzela.

Nakomi

nz mw kw gb

... ..

nzu kwe mwo gbi

... ..

Nzela Mwese Gbagba

... ..

Gbagba ezali na nzela.

.....

Natali



Natangi

Ndako ya biso

Ndako ezali mpembeni ya gbukulu.
Nzete eye epesaka solo kitoko.
Dido alali na nse ya gbukuku.
Malata atelimi liboso lya ndako.
Mama apesi Malata kwanga.

Nakomi

Malata atelimi liboso lya

Natangi

w g v z nt nz kw gb o i a

mpo ndi nsu nze nta Kwe

Ndako Goigoi Ntondo

Gola akimi gbukulu.

Nakomi

O ndako, tozali na

Bifandelo

Mboka

Natali mpe nalobi.



Natangi

sw sw bw bw ny ny mb mb

Mbala Bwale Lisweswe

Nyoka eswi mbwa mbala ibale.

Nakomi

sw bw ny mb

... ..

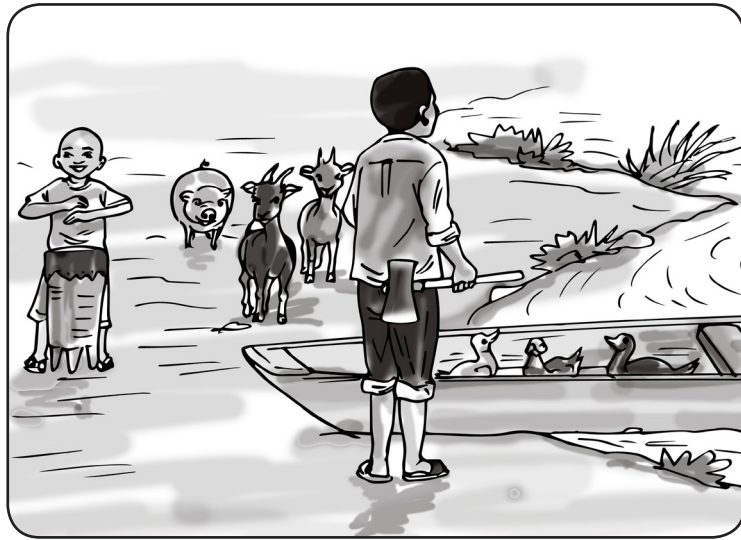
Mboka Bwanya Liswi

... ..

Nyama ekomi mpo ya mbeka.

.....

Natali



Natangi

O mboka

O mboka, Dido abeti mbonda.

O mboka, nyama ibimi.

O mboka, tata asali bwato.

Masweswe mamati na bwato.

Nakomi

O ... , tata asali bwato.

Natangi

ng ng nk nk mbw mbw

Nge nku mbwe ngi nko nga

Ngele Nkoyi Mbwa

Tata na ngele akimi nkoy.

Nakomi

ng nk mbw

... ..

Nge nku mbwe ngi nko nga

... ..

Ngele Nkoyi Mbwa

... ..

Tata na Ngele akimi nkoy.

.....

Natali



Natangi

Mboka ya Dido

Mboka ya Dido etondi matiti.

Ngungi itondi mboka.

Ngungi iswi mbwa.

Nkumu wa mboka asangisi baimboka.

Banso bakati matiti, ngungi ikimi.

Nakomi

... iswi ...

Natangi

sw bw ny mb ng nk mbw

swi bwa nyo nke ngu mbwa

Lisweswe Nyama Bwato

Nakomi

O mboka, tozali

ETENI YA 2

KOMIBATELA.

Nzoto ya moto

Biteni bya nzoto

Natali mpe nalobi.



Natali



Natangi

Biteni bya nzoto

Lili ayebi biteni bya nzoto mpe atangi yoko yoko.

Moto, mobimbi mpe binama.

Akolakisa eteni yoko yoko.

Akotanga malamumu mpe abungi eloko te.

Mozimi wa ye kumisi ye.

Nakomi

Biteni bisato bya nzoto ya ngai.

.....

Natali



Natangi

Nzembo ya Dido

Molakisi atangisi biteni bya nzoto.
Dido amekoli mateya liboso lya molakisi.
Alaki te akobosana mango lisusu te.
Akomi koyemba moto, mobimbi mpe
binama.

Nzembo ekomi ya eteyelo mobimba.

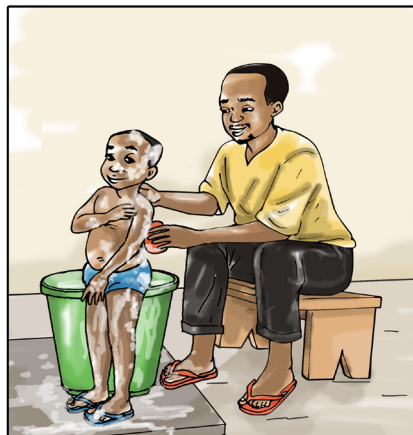
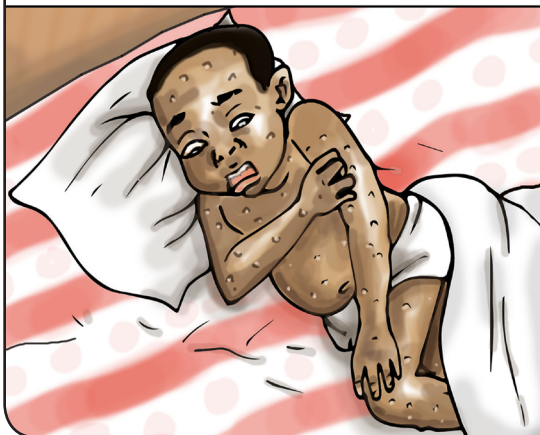
Nakomi

Koma biteni bisato bizali na moto.

Nzoto ya moto

Bopeto bwa nzoto

Natali mpe nalobi.



Natali



Natangi

Kokima makono

Mama apesi Dido mobeko alobi boye:
Mpo na kokima makono zala peto.
Ntango inso kokata manzaka.
Yambo ya koliya, sukola maboko.
Soko outi zongo sukola maboko.

Nakomi

Makambo masato nasengeli kosala
mpo ya kokima bokono.

Natali



Natangi

Mwana wa bopeto

Malata azalaka seko peto.

Ntongo inso, asukolaka nzoto ya ye.

Abandaka konika mino mpe lolemo na monsoki.

Asukolaka nzoto na sabuni mpe mai ma peto.

Akangaka suki ya ye kitoko.

Alataka lipapa seko, azali peto.

Nakomi

Nini nasalaka ntongo inso mpo nazala peto.

.....

Na maloba maye manso, nazingi liloba liye litali bopeto bwa nzoto te.

Sabuni

Mai

Zelo

Kosukola

Linuka

Nakomi mpo ya nini nalingaka kozala peto ntango inso :

--

Nakomi na lisakola lyoko ntina nini nasukolaka maboko nsima ya zongo.

--

Bilamba

Bilamba bya basi, mibali mpe bana

Natali mpe nalobi.



Natali



Natangi

Akala enene

Tata asombeli Malata akala enene.

Alati, kasi asepeti te : ezipi makolo.

Akala elai lokola zambala.

Tata amemi yango epai ya mosoni.

Akala ekoki Malata mpe ekomi kitoko.

Malata ayoki nsai, atondi baboti botondi.

Nakomi

Motindo mwa elamba nalingaka.

.....

Natali



Natangi

Bilamba bya sika

Dido na Malata bazwi milato mya sika.
Dido azwi kaputula, simisi na ekoti.
Malata azwi sangatumbu na akala.
Bango banso babakisi mompila.
Lomingo lokoki, balati kitoko.
Bato banso bakumisi bango.

Nakomi

Motindo mwa elamba basombeli nga.

Na maloba maye manso, nazingi liloba liye lizali lya motindo mwa elamba.

Monkoto
Akala
Kaputula
Simisi
Sabuni

Nakomi elamba nalingaka kolata mpo ya kokende limpati :

--

Nakomi na lisakola lyoko lolenge lya elamba nalingaka kolata.

--

Bilamba

Lolenge mpe langi la bilamba

Natali mpe nalobi.



Natali



Natangi

Langi la bilamba

Balakisi, kapita, bayekoli balati bilamba ndenge na ndenge.

Balakisi balati kazaka ya siliki ya langi ya moindo.

Bayekoli babali balati kaputula ya telegale ya bule.

Bayekoli basi balati sangatumbu ya telegale ya bule.

Banso balati simisi, akala ya ntokya ya mpembe.

Simisi ya Dido ezali na mwa libenga liboso.

Nakomi

Langi la bilamba na lingaka

.....

Natali



Natangi

Bilamba bya nteke.

Sanza ya isato, bamama bakosalaka nteke.

Mama aponi elamba ya ndeke ndeke!

Basi basusu baponi bilamba bya fulele!

Bilenge basi baponi maputa ma ngola.

Bango banso basoni lopu.

Nakomi

Motindo mwa elamba naponi.

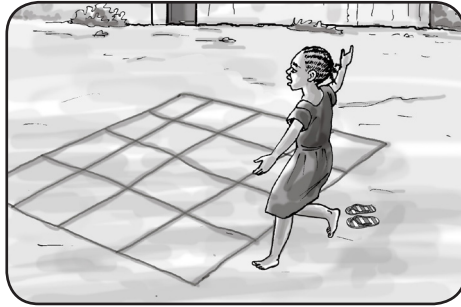
Masano

Masano ma moto moko

Natali mpe nalobi.



Natali



Natangi

Lisano Iya kaka

Na nzanga, Lili alingi asana ye moko.
Akamati nzete mpe ayemi etando o
mabele.

Na kati ya etando ena, akati bitando
bike.

Abandi kopumbwa mpe kokota na
etando yoko yoko.

Makolo mabale na bitando bibale mpe
akoyemba.

Akwei te, asani na esengo mpe aseveli.

Nakomi

Nkombo ya lisano liye nalingaka kosana.

.....

Natali



Natangi

Lisano Iya silikoti

Dido asimbi nsinga na maboko mabale.
Akolekisa yango o moto mpe makolo.
Makolo ma Dido makotombwama mpe
makokita.

Lokolo la mobali nsima la mwasi.
Akotanga mitango mbala inso nsinga
ekobaluka.

Akopumbwa lokola ndeke motema
motondi na nsai.

Nakomi

Lolenge nazali kosana.

.....

Na maloba maye manso, nazingi liloba liye lizali lya esanele te.

Ndembo
Mwana bitenzi
Selele
Motuka
Fufu

Nakomi lisano nalingaka kosala soki nazali ngai moko :

--

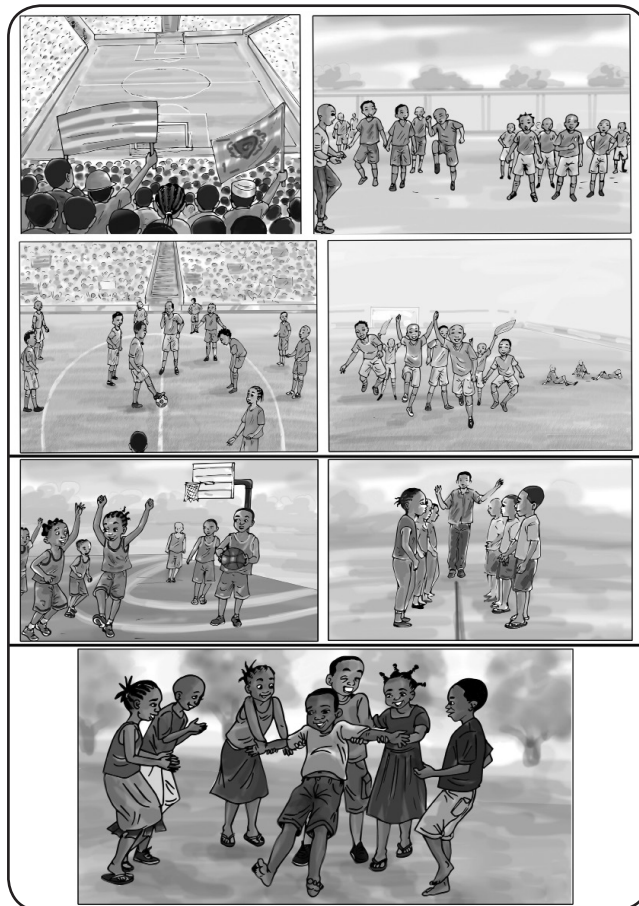
Nakomi esanele to lisano liye nalingaka kosala nsima ya kelasi.

--

Masano

Masano ma lisanga

Natali mpe nalobi.



Natali



Natangi

Lisano Iya nzango

Dido, Lola, Lili mpe Gola balingi basana. Gola atuni : « Lelo tosana lisano nini ? ». Dido alobi selele tosana na yango mikolo minso.

Lili alobi babeta nzango, babeta yango kala. Babeti nzango: bakopimbwa, kobeta maboko mpe kokesenisa makolo.

Soki makolo makokani moto moko alongwe.

Nakomi

Lisano liye nakosana na baninga.

.....

Natali



Natangi

Lisano Iya kukule

Mpokwa bana banso bazali na ndako na bango.

Dido na Malata bazali kosana na kukule. Dido alobi: « Kukule ». Malata azongisi : « Yambembe ».

Dido : « Malata naya ». Malata azongisi : « Yaka ».

Dido azali koluka Malata, kasi Malata amonani te. Mbala yoko Malata akangi ye miso mpe alobi : « ngai oyo ? »

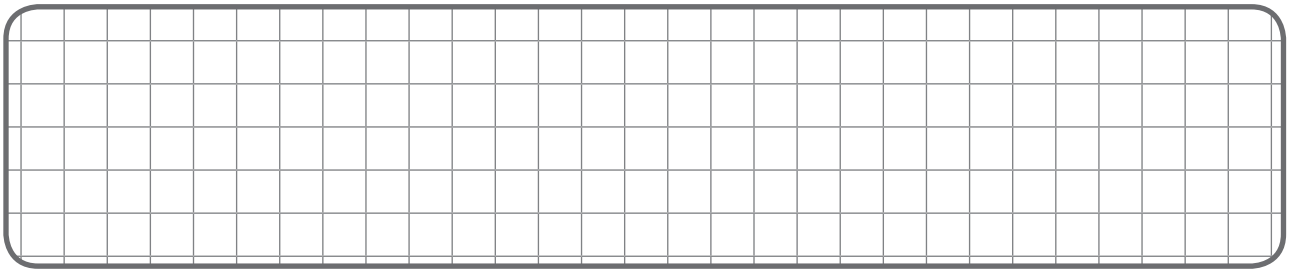
Nakomi

Lisano liye nakosanaka na baninga na mpokwa.....

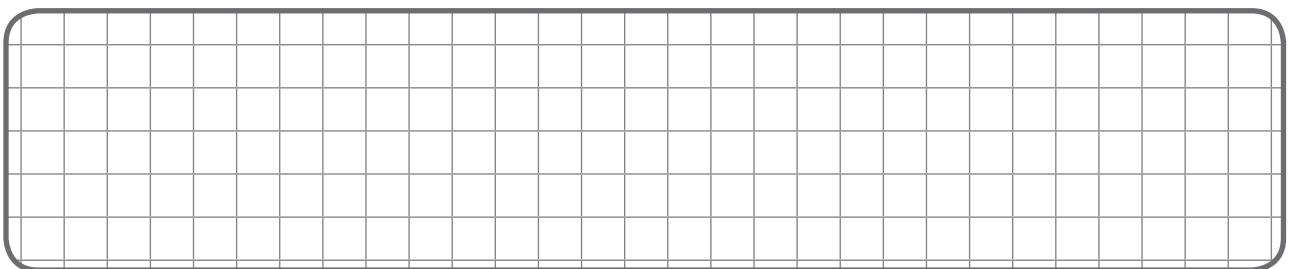
Na maloba maye manso, nazingi liloba liye lizali lya lisano te.

Kebo
Kaka
Mbula
Lipate
Kukule

Nakomi lisano lya lisanga liye nalingaka :



Nakomi esanele eye nalingaka kosana na yango.



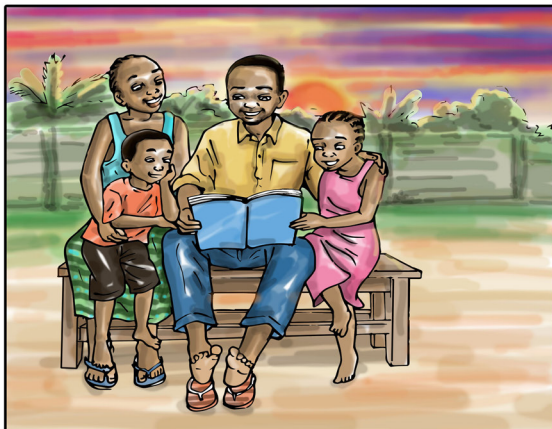
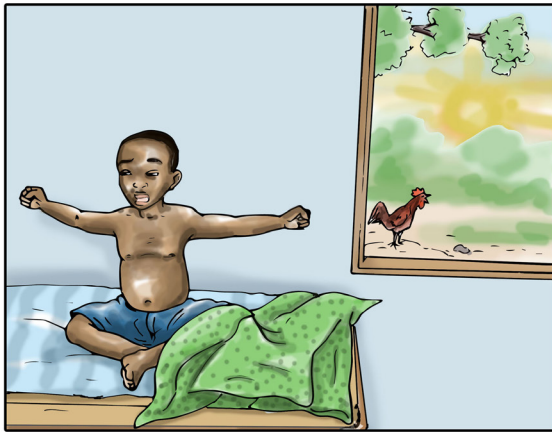
ETENI YA 3

**KOBIKA ENGBENE YA BILEKO
MPE YA MISALA MYA
ZINGAZINGA
WA YO.**

Ntango

Mokolo - Mposo - Sanza

Natali mpe nalobi.



Natali



Natangi

Ngonga ya Lili

Na ntongo, Lili alamuki.

Na ngonga ya sambo, Lili akei o kelasi.

Na ngonga ya zomi, Lili asani na lobala.

Na nzanga, Lili azongi o ndako.

Na mpokwa, asali momekano.

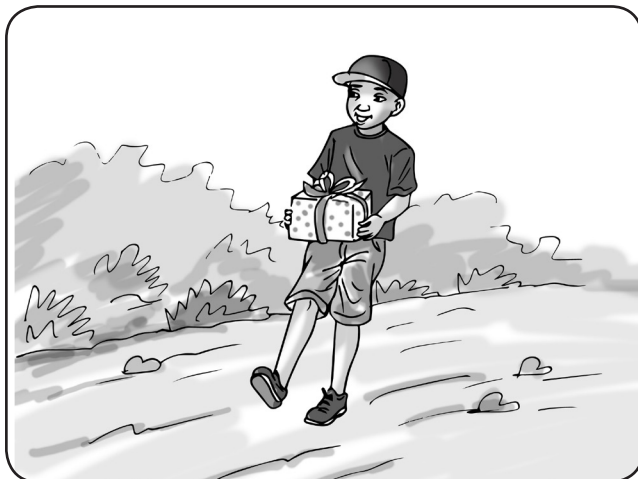
Na ngonga ya libwa, Lili akei kolala.

Nakomi

Ngonga na lamukaka.

.....

Natali



Natangi

Mposo ya Dido

Mokolo mwa yambo, Dido akei o zando nsima ya kelasi.

Mokolo ya mibale, Dido akei kokatisa nsuki nsima ya kelasi.

Mokolo mwa misato, Dido akei epai ya mosoni.

Mokolo mwa minei, Dido akei epai ya mosali bikoto. Mokolo mwa mitano, Dido aluki likabo. Mokolo mwa motoba, Dido akei milulu mya mbotama ya Lili.

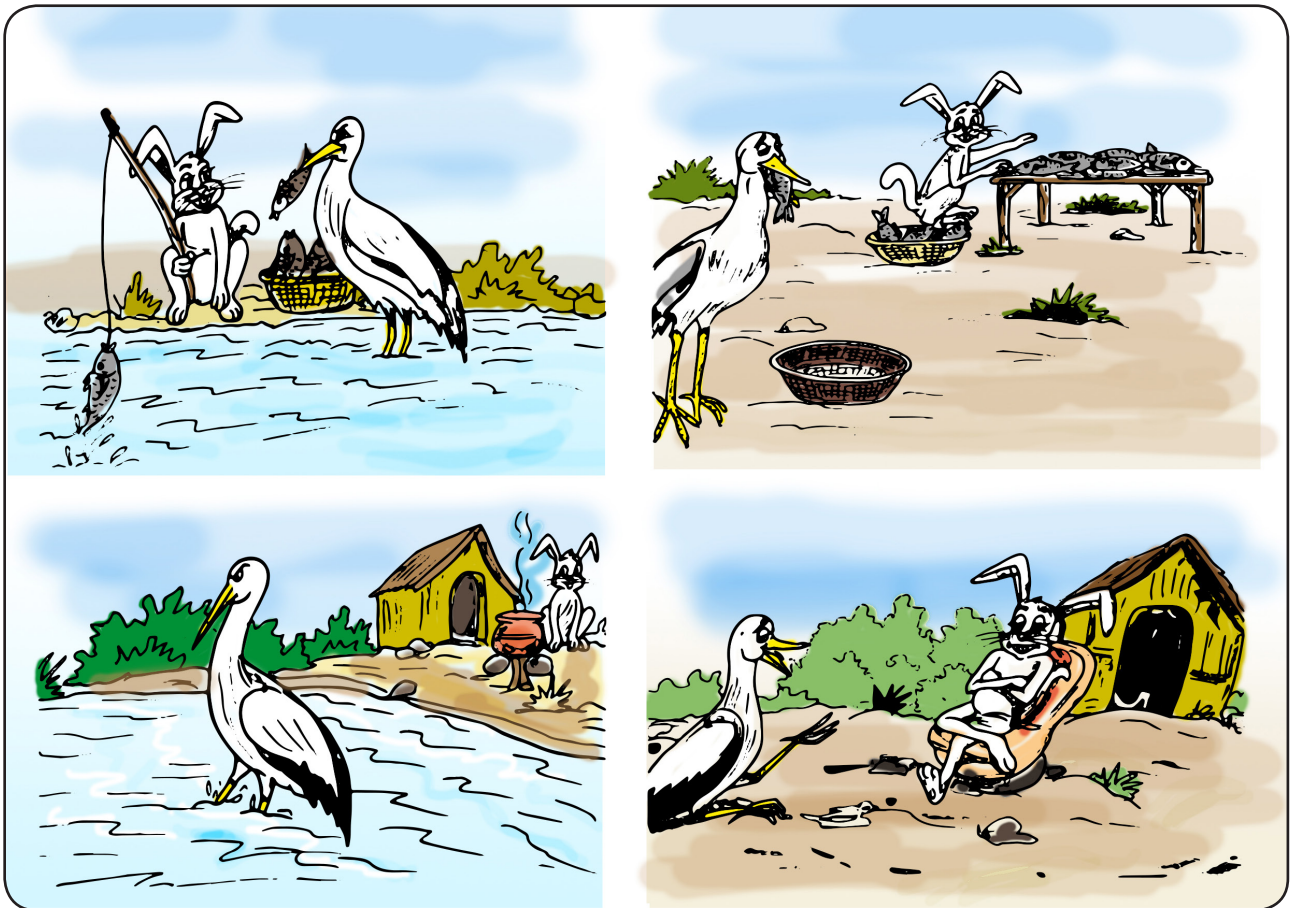
Nakomi

Maye nasalaki mokolo mwa misato.

Ntango

Bileko

Natali mpe nalobi.



Natali



Natangi

Mbula ezongi

Sanza eye tozali na esengo.

Mbula ezongeli kobeta, biso banso tolingi kolona.

Tosombi mboto mpe totii na mabele.

Ngai na baninga tosanaka na nse ya mbula.

Tosukolaka mpe toyembaka na nse ya mbula.

Nakomi

Milona mya eleko ya mbula.

.....

Natali



Natangi

Eleko ya elanga

Elanga eyei makasi, na ntongo tozali kosala oli mpo malili masila.

Malili ntongo tee mpokwa.

Mama asombeli biso, bilamba bya malili. Balobi mbisi bazali na esengo mpamba 'te mbisi ibimi ebele.

Ngai na Malata tozali koyoto moto butu inso.

Nakomi

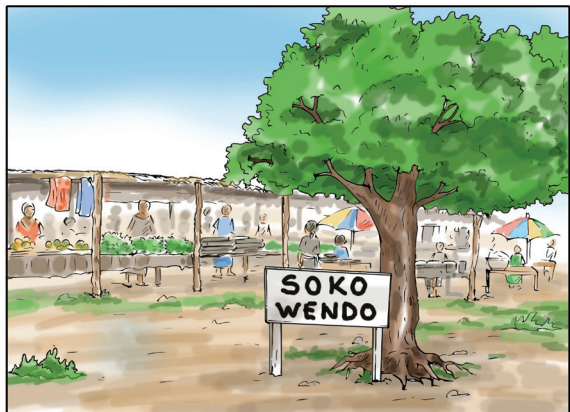
Lisano liye tokosana lobi.

.....

Zando

Bato ba zando - Misala mya bango

Natali mpe nalobi.



Natali



Natangi

O kati ya wenze

O kati ya wenze, Mboyo azali moteki.
Mikolo minso atekaka biloko bya sika.
Mama Moseka azali mosombi molamu.
Alingaka kokakola te, soki akoti o molongo
bato basepelaka.

Lokuli azali mokumbi biloko, soki opesi ye
biloko bya yo, akokomisa byango ata opesi
ye mosolo te.

Nakomi

Nkombo ya bato bazalaka o zando.

Natali



Natangi

Dido o zando

Lelo Dido akei kotika mama na zando.
Bakomi o zando, batuni talo ya ndunda.

Mama asombi bitekuteku na tomati.
Bakoti na molongo mwa mbisi, basombi
monganza.

Nsima basombi biloko bikebike mpe
bazongi o ndako.

Dido aseveli, ayebisi mama amemaka ye
mikolo minso.

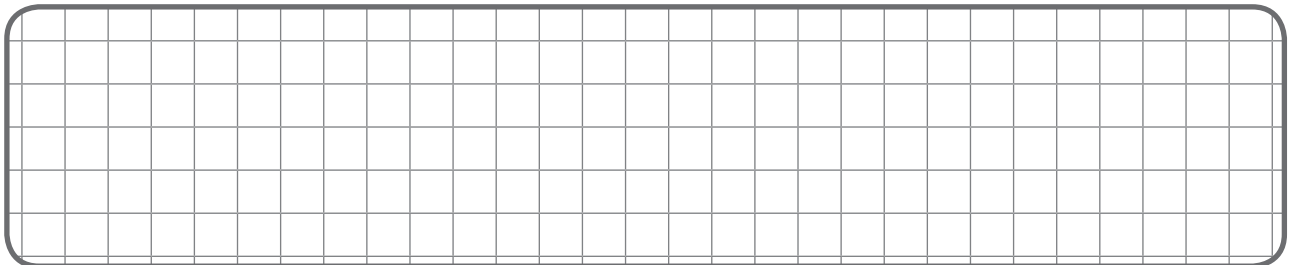
Nakomi

Nkombo ya biloko tosombi na zondo ya
biso.....

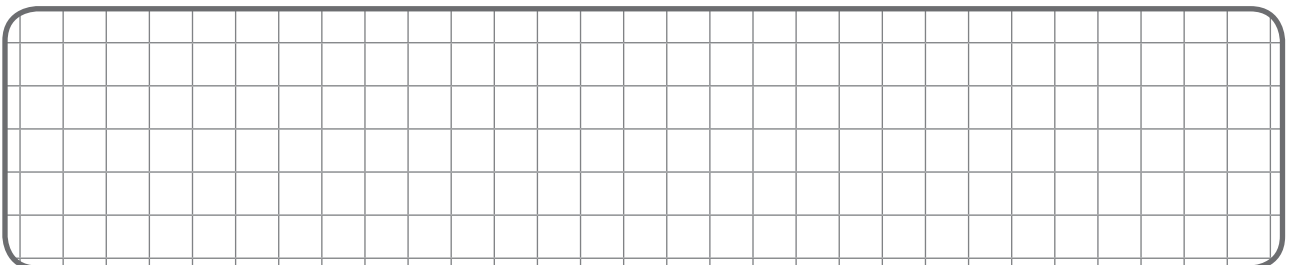
Na maloba maye manso, nazingi liloba liye lizali lya bato ba zando te.

Moteki
Mosombi
Mokumbi biloko
Mofutisi mpako
Molei

Nakomi likambo nalingaka kosala na zando:



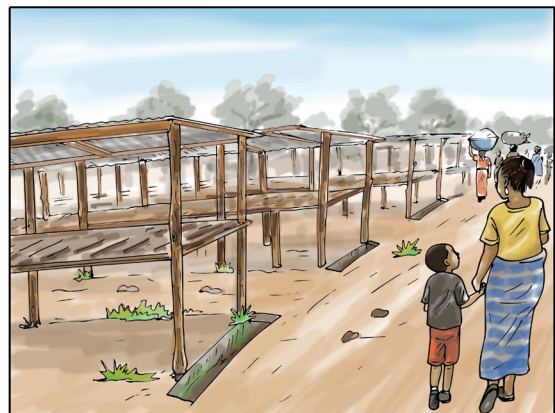
Nakomi na lisakola bato nalingaka o zando.



Zando

Masolo o zando - Biloko bya koteka

Natali mpe nalobi.



Natali



Natangi

Tokei kosomba bilei

Lelo, Malata na mama bakei kosomba biloko.

Bakomi na molongo ya ndunda, bakakoli ndunda mpe basombi.

Bakomi na molongo ya mbisi ntalo makasi.

Mama aseveli kosomba nyama ya ntaba.

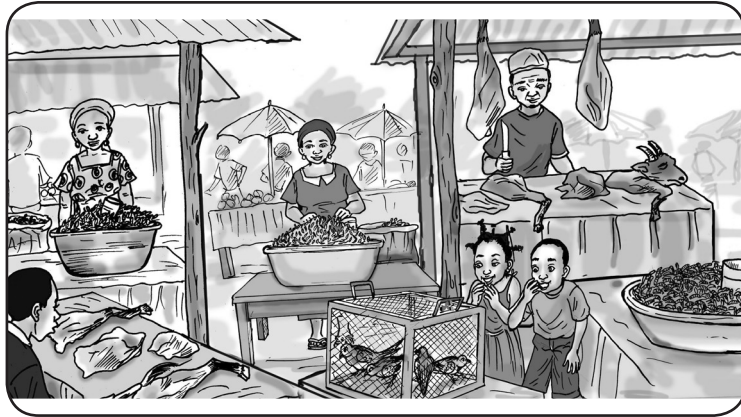
Bakei mpe na molongo mwa fufu basombi.

Nsima bazongi ndako, balambi mpe tolei.

Nakomi

Nkombo ya bilei tosombaki na mama o zando.....

Natali



Natangi

Nakoti o zando

Lelo mokolo mwa ngai mwa yambo ya kokota zando.

Namoni bato ebele, bazali koteka.

Basusu bazali mpe kosomba biloko.

Bateki bazali kobelela biloko bya bango.

Basombi bazali kokakola. Natamboli na milongo mingi nasepeli mpe nazongi.

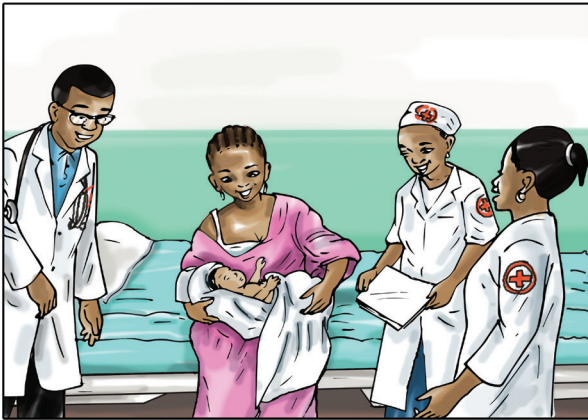
Nakomi

Maye namoni ozando.

Nteke ya libota

Mbotama - Batisimo

Natali mpe nalobi.



Natali



Natangi

Batisimo la Losiya

Elezi Losiya azwi batisimo.
Libota lilengelaki milulu mina na bosembo.
Mokolo mona, balambaki bilei biyike :
ngombe, fufu, makemba...
Bato bayembaki, babinaki, bamelaki mpe
baliyaki na nsai.
Noko Sandowa akosepela na biso mokolo
mwa mposo.
Na bokuse, nteke ya batisimo elekaki
malamu mpenza. Lelo, Lili asepeti koyeba
bomwana bwa tata.

Nakomi

Makambo maye nasalaka na nteke.

.....

Natali



Natangi

Nteke ya Elezi

Lelo tozali na nteke enene o libota.

Lobi loleki elezi akomisamaki na buku ya leta. Bokomisami na buku ena bokokomisa ye mwana mboka. Mpe lobi lokoya libota mobimba likoyamba ye.

Ekela ena epesi nsai makasi o libota mobimba.

Nakomi

Nkombo ya nteke na lingaka o
libota

Na maloba maye manso, nazingi molulu moye mozali lya libota te.

Libala
Mbotama
Mobembo
Batisimo
lipolome

Nakomi likambo nini nasalaka na molulu ya mbotama ezalaki o libata lya ngai.

--

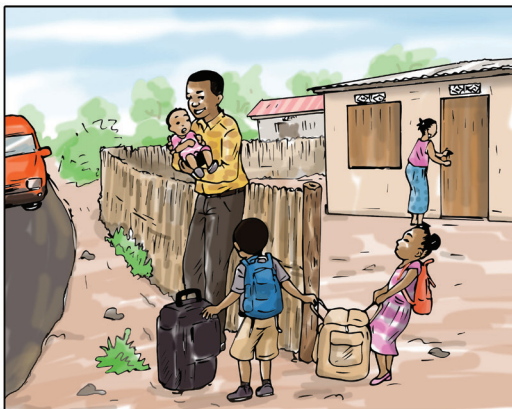
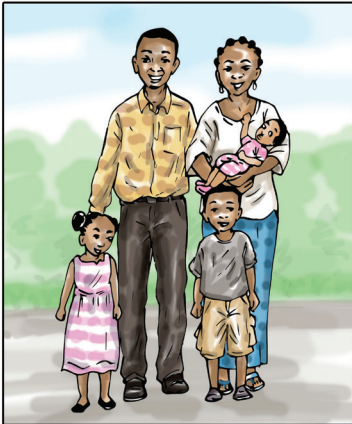
Nakomi na lisakola lyoko likambo nini osepelaka na yango na mbotama.

--

Nteke ya libota

Loi - Bokei - Misala

Natali mpe nalobi.



Natali



Natangi

Mobembo mwa Lili

Lobi, Lili na tata bakokende o mboka Bobito.

Lili alengeli biloko bya mobembo.

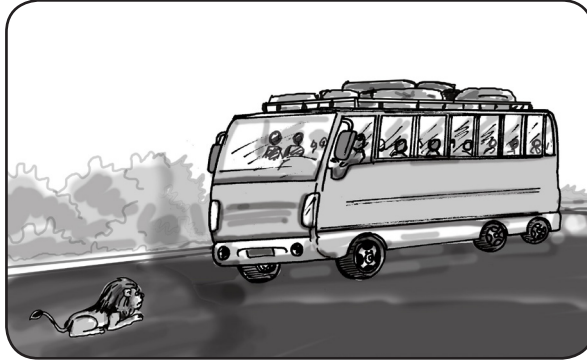
Tata akamati tukutuku, bakei mpe bakomi Nkoko ayebisi Lili ndenge tata azalaka kosana.

Lelo, Lili aseveli koyeba bomwana bwa tata.

Nakomi

Bisika nakenda mobembo

Natali



Natangi

Mobembo mwa mama

O bolenge, mama asalaka mobembo molai na motuka.

O katikati ya nzela, sofele atelemisi motuka. Bato bagangi: « sofele mpo nini otelemisi motuka? »

Sofele azongisi: «Botala Nkoyi enene elali o nzela.»

Ndenge nini tokoleka, nkoyi eye nkanda boye? Kimya! Moibokila agangi: « boleka ezali ya kokufa ».

Nakomi

Maye namonaka o nzela mwa mobembo .

Ce manuel de l'élève a été imprimé grâce à l'appui généreux du peuple américain et du peuple britannique, à travers l'Agence des Etats-Unis pour le Développement International (USAID) et le Ministère Britannique de la Coopération Internationale (DFID/UKAID).



USAID
FROM THE AMERICAN PEOPLE

